

Trends in functional fabrics



kick off summer 2013
update winter 2012/13

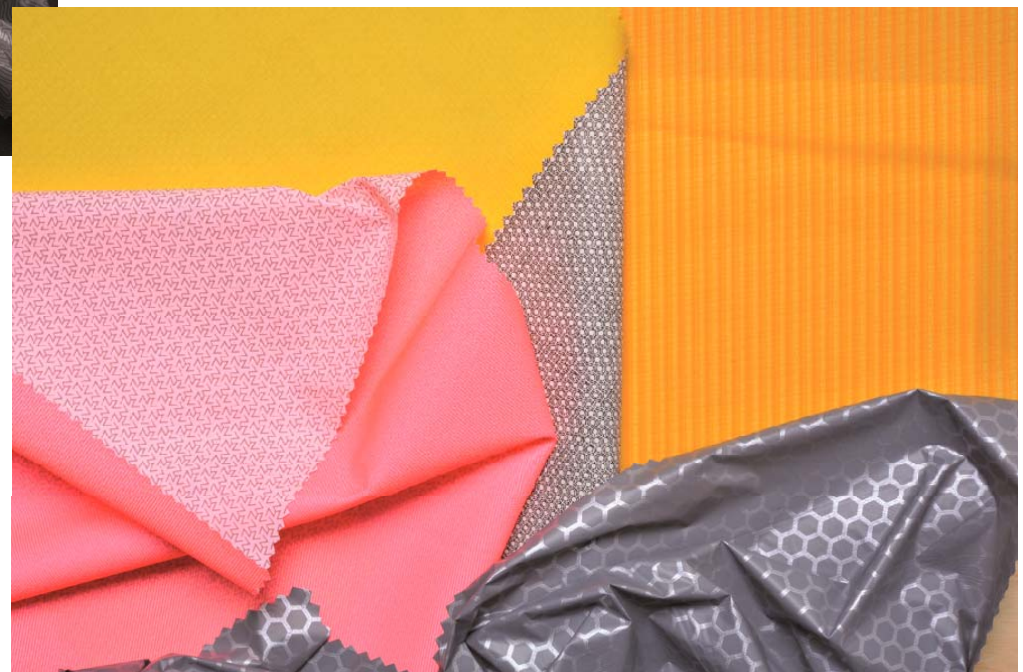
Presented by Performance Days/Ulrike Arlt

waterproof/breathable



from left: Tamurakoma,
Maxland, Ding Zing, Voack

- extra lightweight 2.5 layers
- soft & smooth but max. protection
- halfway inner linings
- membranes thinner than the human skin
- bright colors combine function & fashion



clockwise from top: Global
Challenge, Ding Zing, Eschler,
Everest

waterproof/breathable



- natural looking surfaces
- woolen optics
- fishbone, salt & pepper or flannel
- invisible function
- high weather protection

clockwise from top: Seabreesz, Paltex, Paltex, Long Advance

softshell



- soft handle, textile feeling
- flannel optics
- soft and warm backings with patterns, knit or embossed fleece
- maximum function

from left: Formosa Taffeta, Tai Hsu,
Long Advance, Frati, New Trend

3-layer



from left: Maxland, Labtex, Dyntex,
Paltex, Sofileta

- lightweight & elastic
- textile feel but functional features: high abrasion, maximum weather protection
- new active colors: bright pink, green apple, royal blue
- patterned back sides

fleece & brushed knit



- many different structures and surfaces
- floral jacquards
- rip stop optics
- flat surfaces - hairy piles
- back sides in contrast colors

clockwise: Tai Hsu (grey), Miti, Carvico,
Hungs Fortune

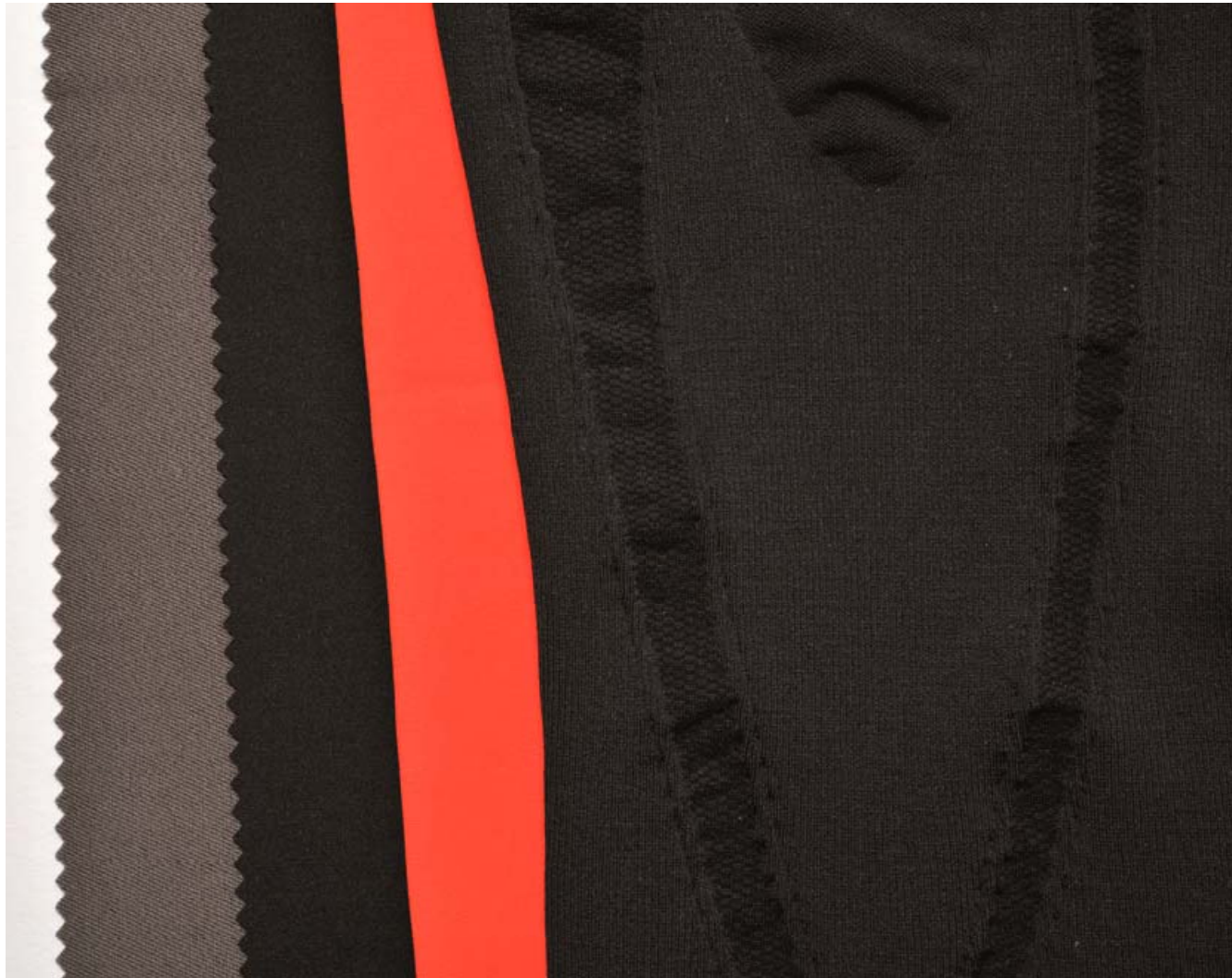
fleece & brushed knit



- new natural look
- knit optic for a handmade character
- visible loops
- jacquard patterns in Norwegian style
- burn-out patterns

clockwise: Kolon, Pontetorto, Becagli, Advansa

knit



- highly elastic
- compressive
- UV-protection
- odor-free finish

from left: Erictex, Sofileta, Jersey Lomellina, Riedel

knit

- extra light and soft on the skin
- mesh-like structures
- quick drying properties, UV protection
- man made fibers as polyamide, polyester, coolmax, thermocool



clockwise:
Borghini Jersey MYBE
(pink), Sitip, 2emme,
Fernando Valente,
Invista/Grandtex (yell.)

knit



- natural fibers
- light & elastic
- 100% cotton
- blends with virgin wool
- piqué structures
- odor free finishing with polygiene or others
- soft pastel colors
- ideal for sportswear looks

clockwise: Riedel (rosé), Advansa, Fischtextiles, Sanko

lightweight



- functional fabrics below 30 gr/sqm
- windproof, waterproof up to 10k
- highly breathable
- high definition prints
- slight transparency
- structures as mini-ripstop

clockwise: Achievetex, Hyosung, ESF, Dyntex

shirts & bottomweight



clockwise: FOV, Klingler, Siantex, Chieftex

Shirts:

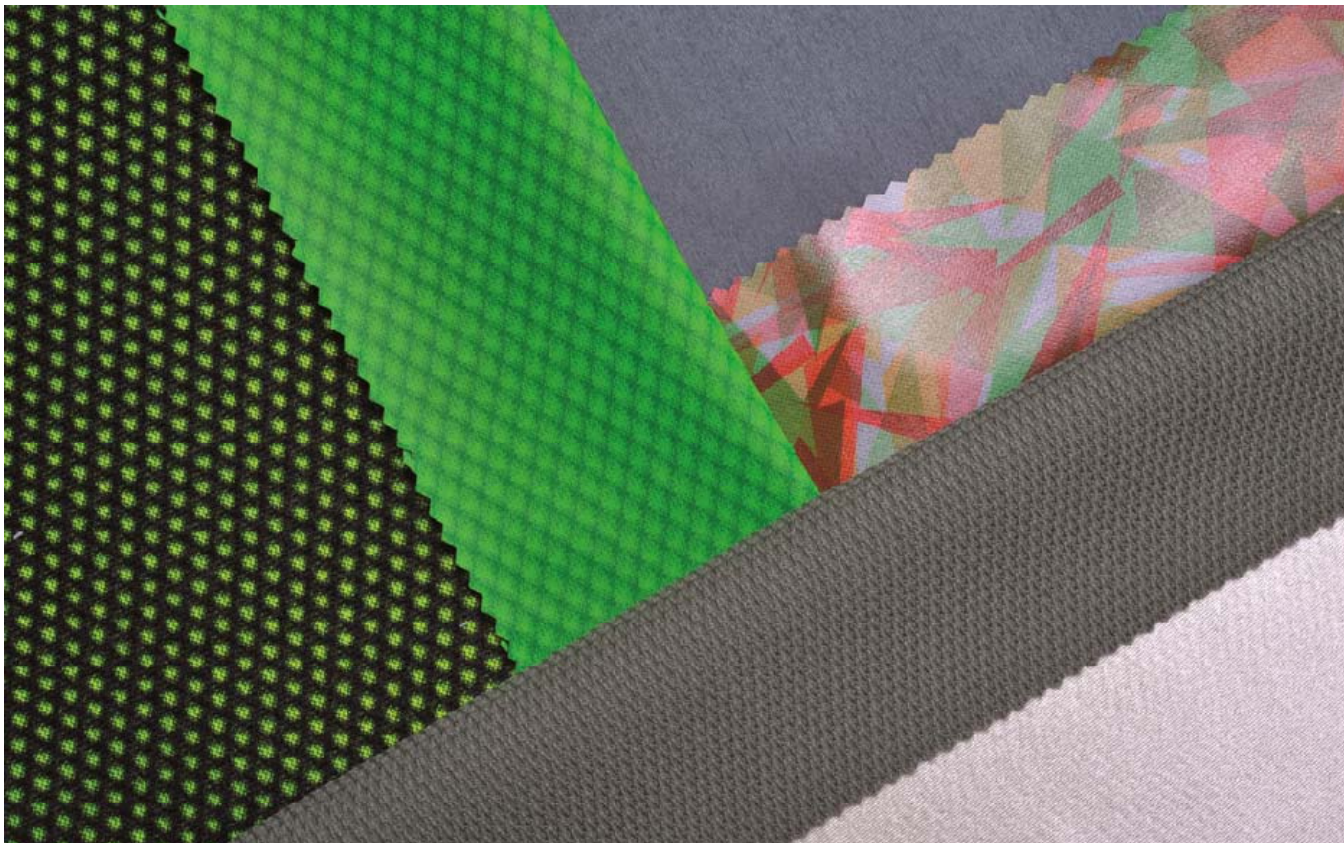
- hot topic: plaid
- flannel qualities for a rugged look, but made of polyester
- light fabrics with UV-protection
- Quick dry materials

Pants:

- waxed surfaces
- extra light and elastic
- durable by ripstop

fancy

clockwise: Solis, Becagli, Solis



Everything is possible:

- surprising surfaces
- extraordinary textures
- contrasting back sides with patterns, foam or mesh structures

fancy

- glossy or milky coatings create new looks
- different fibers in one fabric bring out prints in new ways
- “knitted prints” fool the eye



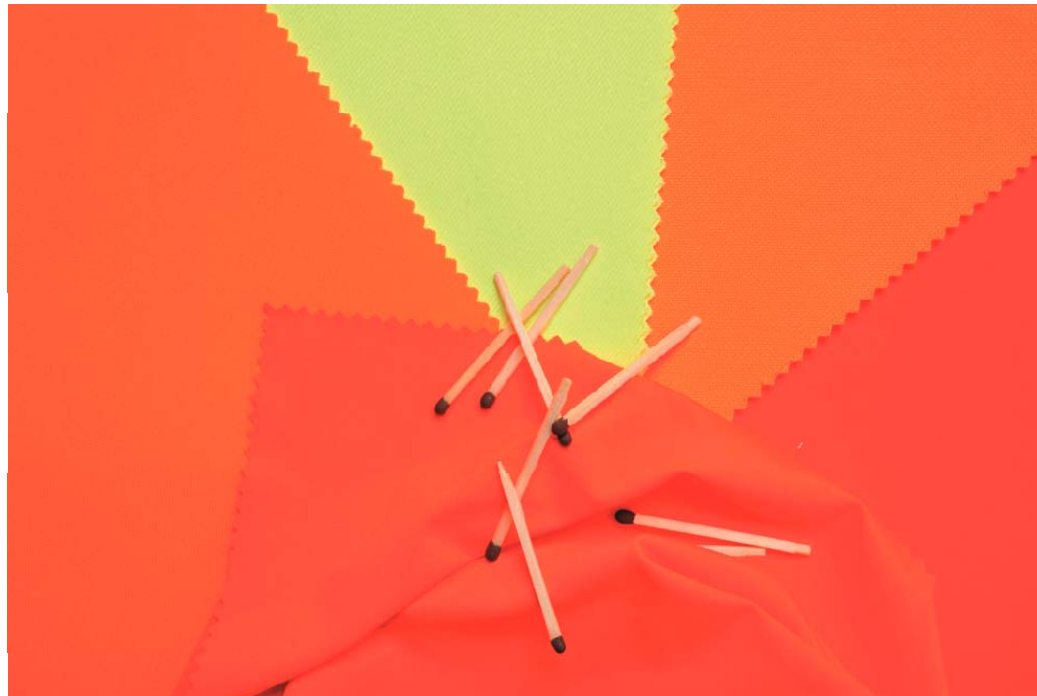
clockwise: Siantex, Seabreesz,
Freetime, Freetime

from left:
New Trend,
Sofileta

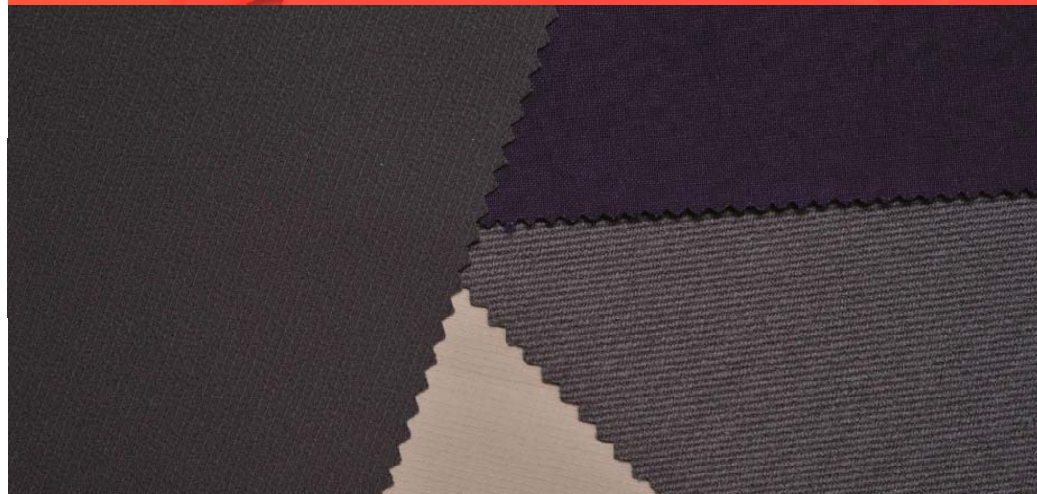


workwear

clockwise:
Invista (yell.),
Voack,
Concordia,
Borghini Jersey
MYBE,
Voack



clockwise: FOV,
Seabreesz,
Maxland,
Hyosung



New dimension of
comfort:

- fabrics feel soft on the skin
- highly elastic
- fleece back sides
- antibacterial properties for odor management
- quick drying fabrics
- UV protection
- high abrasion resistance
- flame retardant
- highly visible

bluesign

clockwise:
Klingler
(green)
Eschler
Sealon
Klingler



clockwise:
Everest
(black)
Everest
Sealon
Eschler



- former eco table under bluesign logo on this roadshow
- ecologically correct, the hardest standard in the textile business
- All types of functional fabrics shown here: membranes, laminates, fleece & knit, tapes, labels, paddings...

accessories

E textint
Regine



Dow
Corning
Primaloft
Eso Zippers



Madeira
JRC Reflex



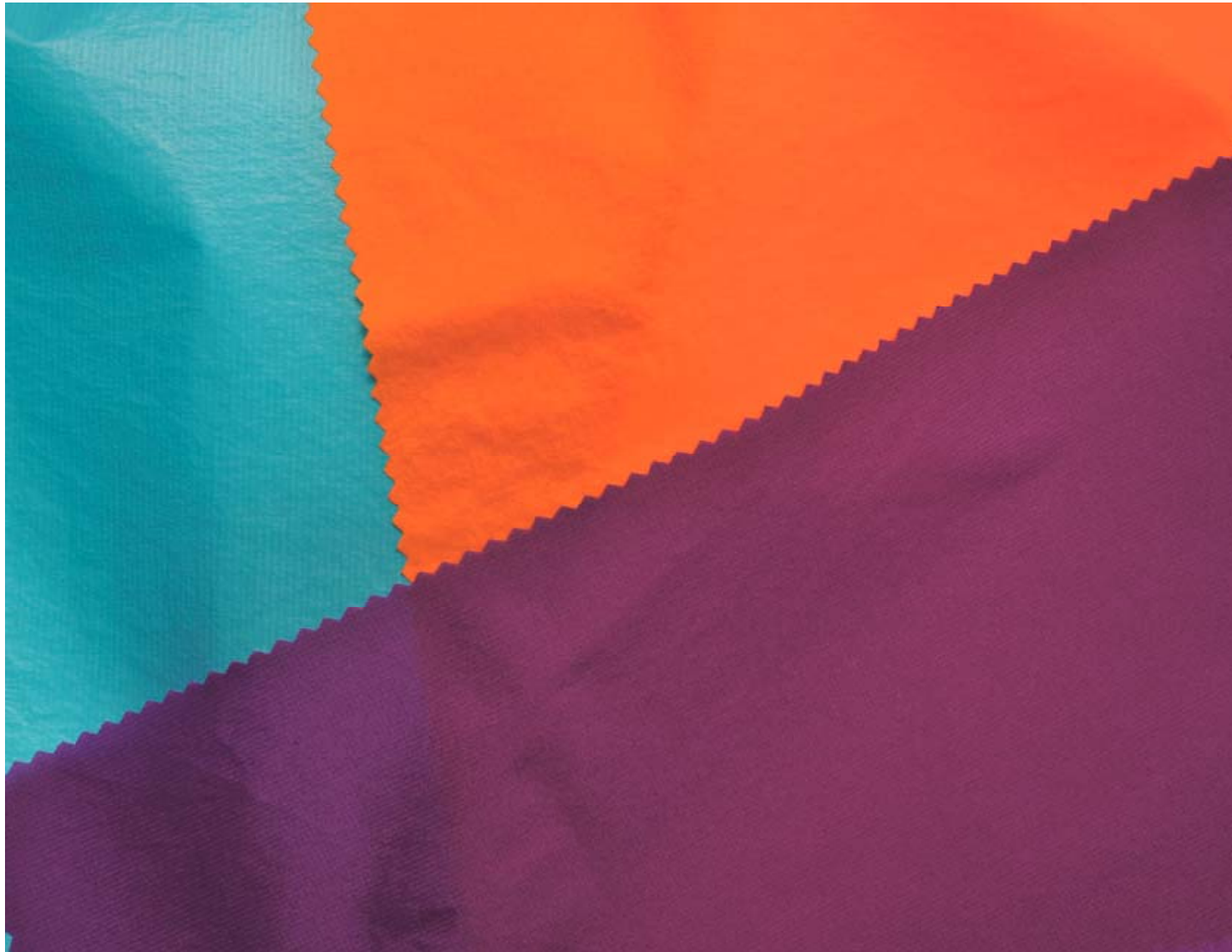
innovation

Dyntex:

- transparent, downproof fabric
- ideal for colored downs
- extra lightweight: only 27 gr/sqm



innovation



Filltex:

- „Airshell“ fabrics with skin+ technology
- microporous direct coating
- hydrophobic PU for dry skin
- now improved new Neo-skin+
- waterproof with 4K column

innovation



A. Sampaio:

- New Outlast PES fibers
- Maximum climate comfort
- dry skin thanks to PES
- Outlast reduces changes in body temperature

innovation



Pontetorto:

- new midlayer concept:
“Tecno-Air Mid”
- PU membrane with small slits
- built in elastic softshell material
- slits open during movement
- maximum breathability plus good wind protection
- different weight classes

Trends in functional fabrics



thank you for your attention!

Presented by Performance Days/Ulrike Arlt