

Trends in functional fabrics



kick off winter 2014/15
update summer 2014

Presented by Performance Days/Ulrike Arlt

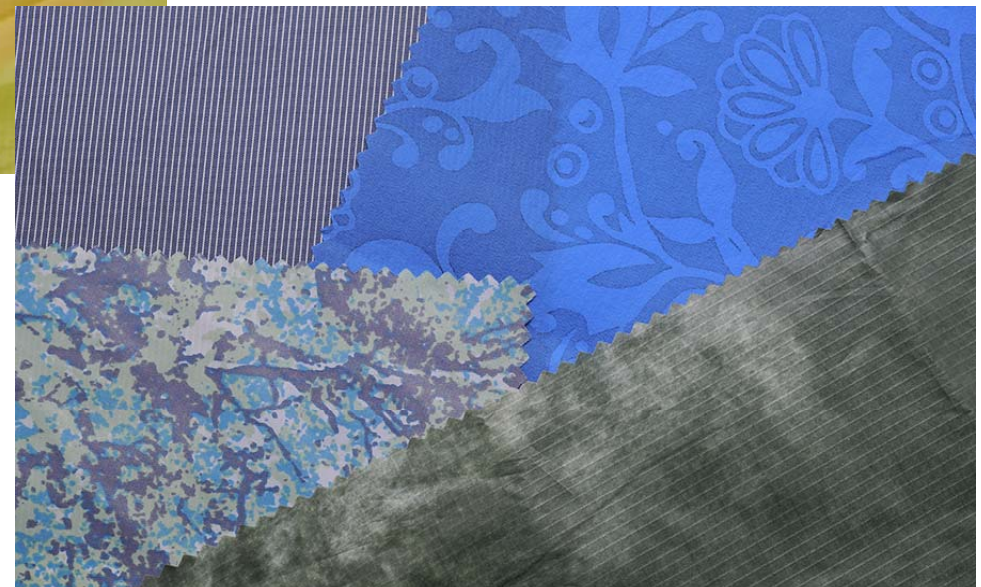
lightweight



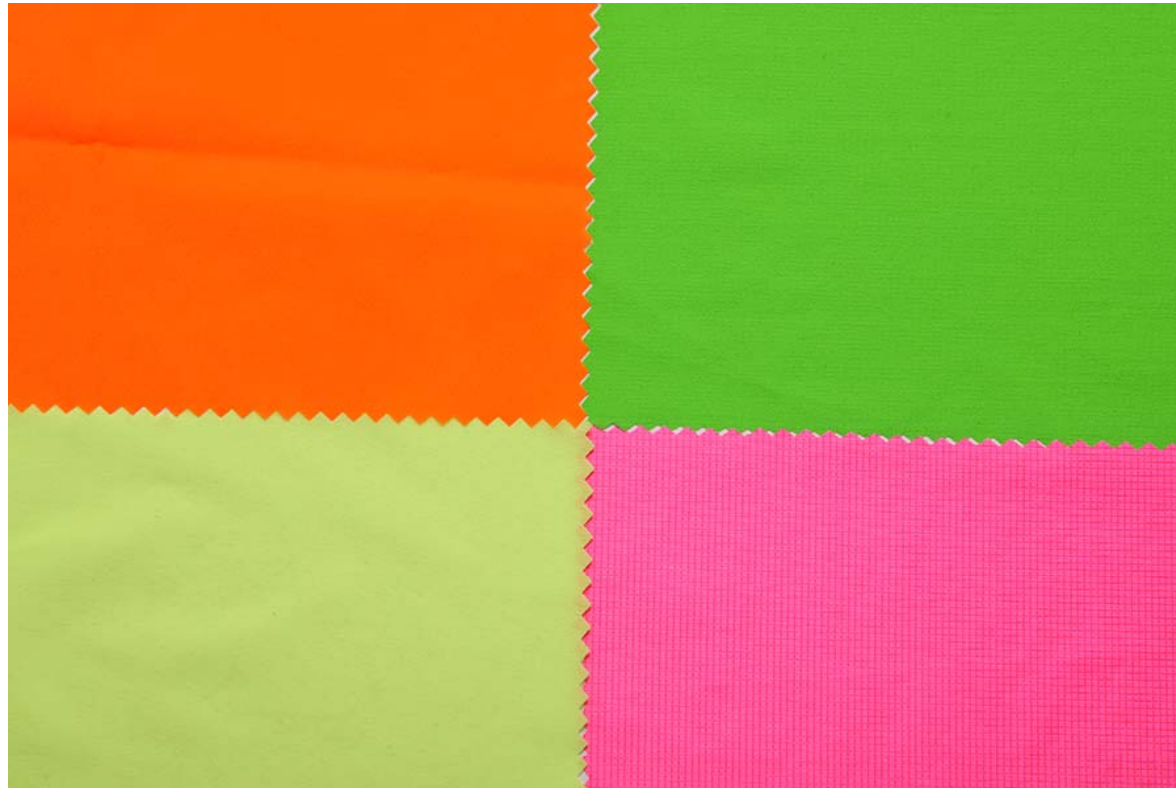
- functional fabrics below 20 gr/sqm
- wovens and knits
- yarns finer than 10d
- highly breathable
- slight transparency
- structures as mini-ripstop
- prints, batik-look, amouflage



clockwise from top: Apex, Global Challenge,
Youngpoong Filltex, Pertex



lightweight



- elastic by construction
- downproof
- colourful
- even if coated = windproof, waterproof qualities up to 10k, but the weight is still below 50g/sqm

clockwise from top: Global Challenge, Tamurakoma, Colotex, Youngpoong Filltex

waterproof/ breathable



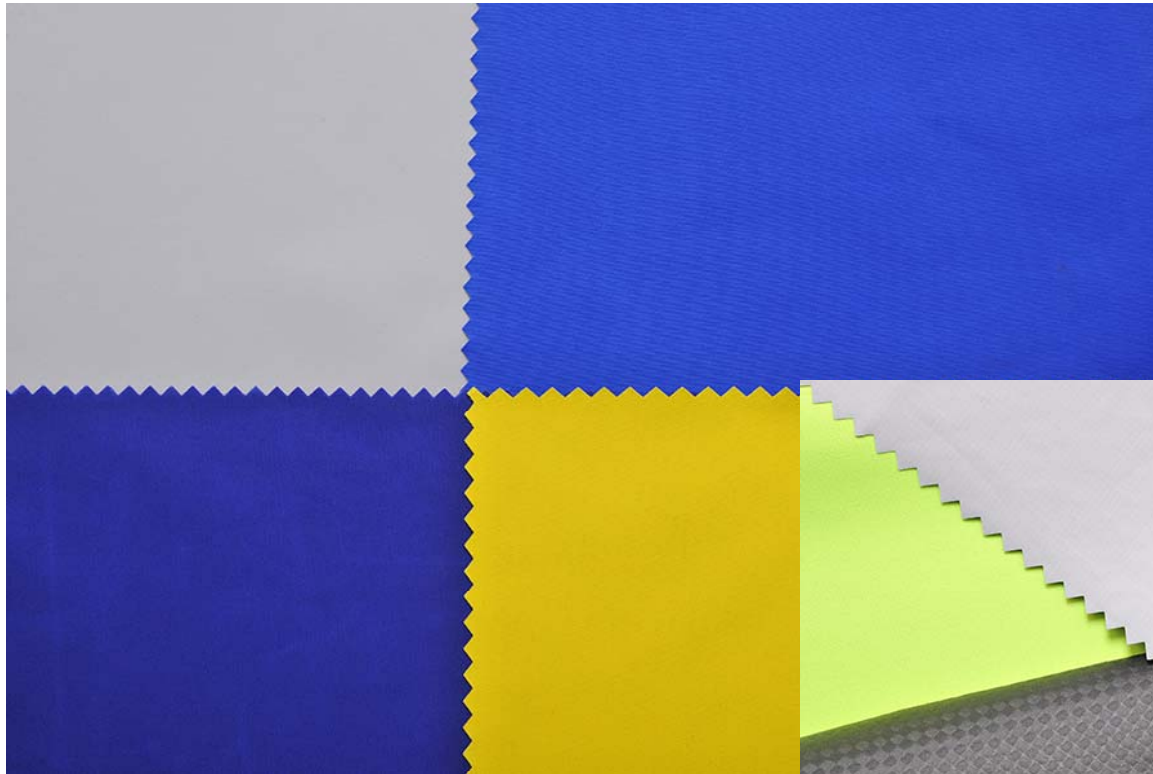
- weight: under 100g/m²
- natural look and feel defines “new basics” in this category
- woolen or flannel touch, cotton or linen look
- structured surfaces

from left: Limonta, WidePlus,
Tamurakoma, Pertex

waterproof/ breathable



- laminated or coated fabrics with supplemental benefits :
- ceramic membranes = increased regeneration
- carbon prints = increased thermal efficiency & moisture management
- graphite coating = abrasion resistance



clockwise from top:
Wertex, FOV,
Youngpoong
Filltex, Solis



Softshell & 3 -layer



from left:
Amaterrace 2x,
Filltex, Limonta



- 3-layer-constructions with soft handfeel
- textured yarns, 15d or less
- extreme elasticity
- soft tricot backings - new: made from merino wool

Softshell & 3-layer



- rustic look for the softshells
"remember Luis Trenker"
- natural feel but functional
features: high abrasion,
maximum weather
protection
- bonded, not laminated
- textured yarns, no rustling
or swishing noise

from left: Paltex, H-One Tex,
Schoeller, Aiale

fleece & brushed knit



from left:
Pontetorto,
Aiale,
IFabrix,
Aiale

- 2 different themes on the table:
- “casual thinking”, natural look (vs. top function)
- knits and fine knits, smooth or rough
- hairy qualities, raschels, high loft

fleece & brushed knit



- “power stretch qualities” - high percentage of spandex, pile inside, smooth and clean outside
- quick drying
- good thermal retention

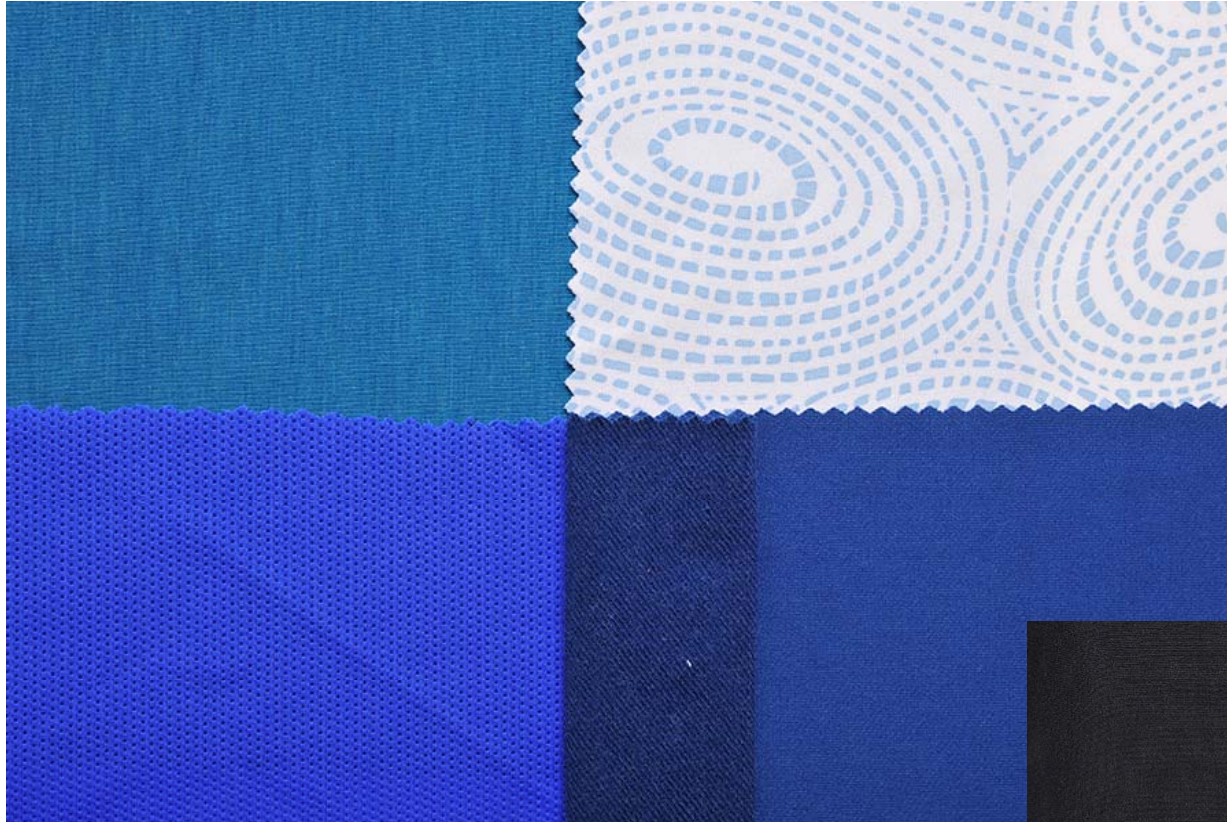
clockwise from top:
Colotex, Evertex,
Pontetorto, Colotex



knit



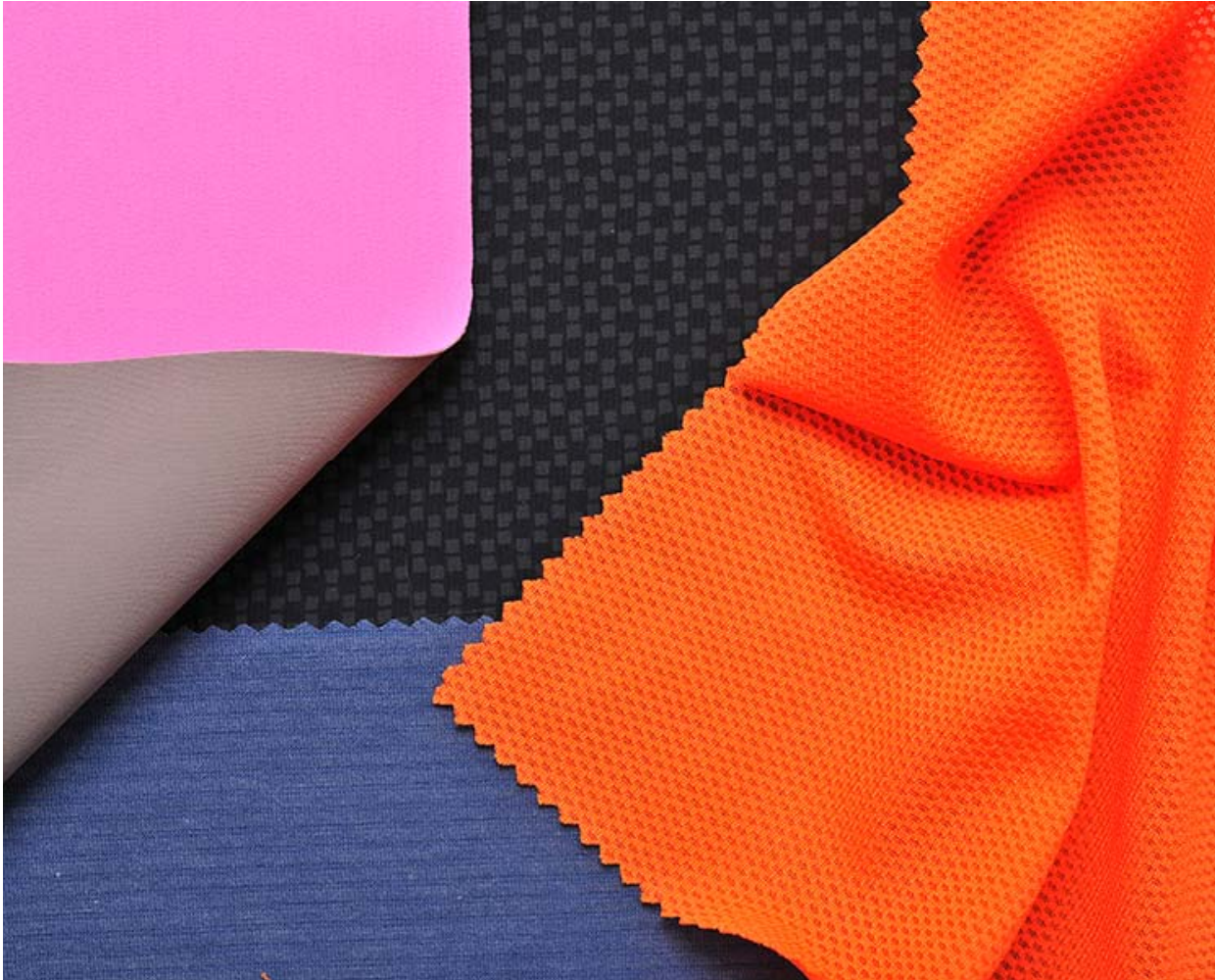
- great variety: man made fibres blended with others - e.g. natural fibres as merino wool or cotton
- polycotton mixes with seacell, tencel, modal, linen, silk...



clockwise from top:
Premiere Fashion,
Hung's Fortune,
Texperts, Optimer Brands



knit



top function:

- compressive knits
- cotton with functional properties as moisture management
- mineral particles reflect far infrared rays (FIR-materials)

clockwise from top: Eurojersey,
Evertex, Optimer Brands, Eurojersey

shirts & bottomweight



Shirts:

- light fabrics with mechanical stretch
- fine weaves
- material mixes with natural fibres

Pants come in three groups:

- stable fabrics
- stretch fabrics
- double weave stretch fabrics
- high-tech look vs casual look



from left: Classique Textile,
Optimer Brands, Achievetex, Wertex

clockwise from top: New Trend,
SianTex, Chia Her, Burlington



fancy

- unique appearance, unexpected backings
- 3-D embossed fabrics, 3-D stitched fabric with reptile look
- fake leather, cut out fabrics show the membranes inside
- overprinted plaids with tapestry motives



clockwise from right:
Hi-TEX, Frati 2x

clockwise from top: Paltex 2x,
Chang Ho, Everest



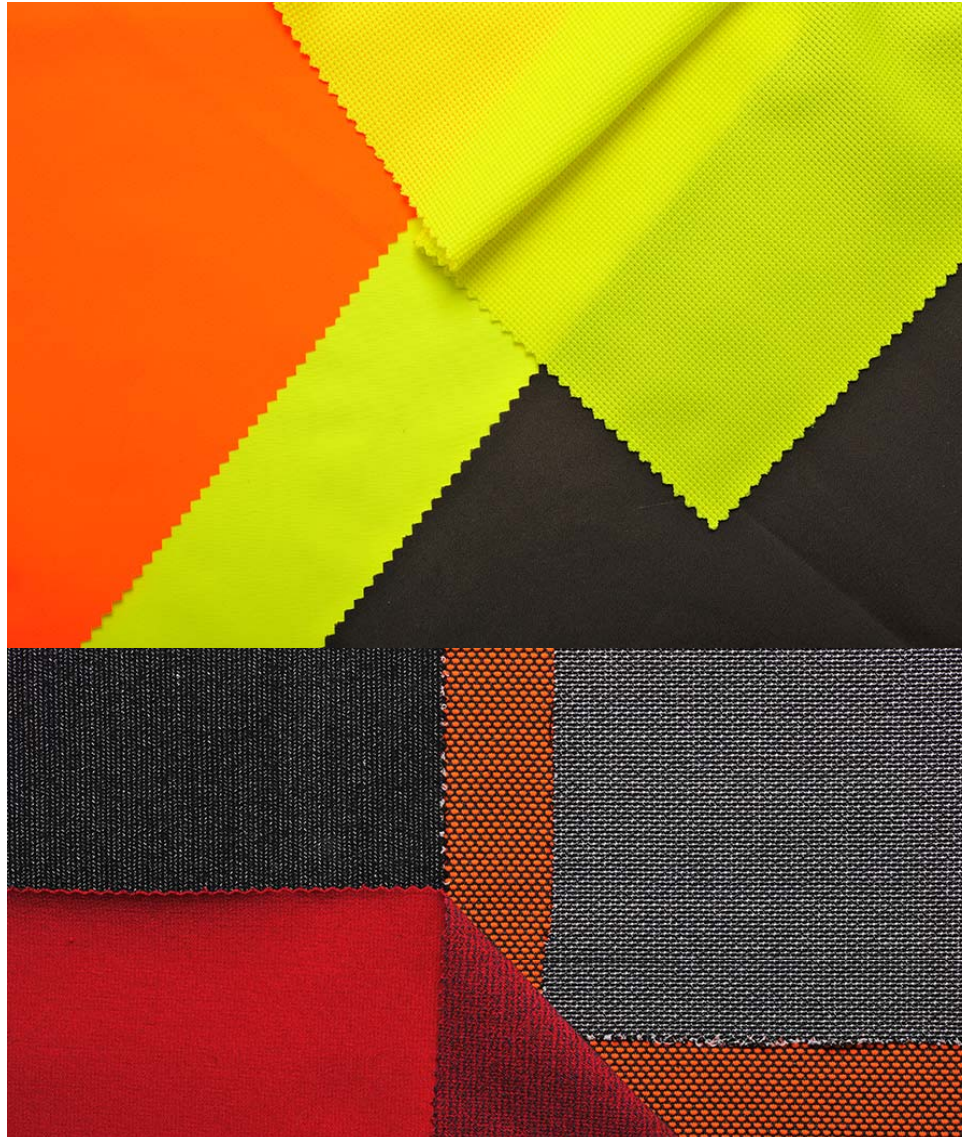
workwear



New dimension of comfort:

- fabrics feel soft on the skin
- offers protection while staying flexible and comfortable
- antibacterial properties for odor management
- New: dyneema in a fabric - the strongest fiber in the world - 15x stronger than steel!
- New: Black Twaron (Aramid fiber) formerly yellow

clockwise from top: Labtex, SianTex, Hi-tex, Maxland



clockwise from top: IBQ 2x, Youngpoong Filltex, IBQ

eco

clockwise from
top: Erictex,
Schoeller, New
Trend, Labtex



clockwise from
top: Hung's
Fortune,
Texperts, Sunny
Special Dyeing,
Hung's Fortune

- environmental considerations are implemented in a variety of ways:
- natural materials, recycled fabrics and fibres and recyclable ones, even recycled wool and new: organic wool!
- new coatings made of polyamide of castor bean oil
- energy saving yarns need lower dyeing temperature means less energy

accessories

zippers from
YKK,
insulation
from
PrimaLoft &
Thermore



elastic tapes
from
M.A.R.C.,
reflecting
tape and
fabric from
JRC



tapes from
Sealon,
Labels from
Regine &
ACG



shoes & bags
clockwise:
Wertex,
Schoeller,
Amaterrace,
Wertex



membranes
from Ding
Zing



strings &
ropes from
Société
Choletaise
de
Fabrication



performance award winner



Amaterrace PT 5303-60:

- extra light 3 layer laminate, 54 g/sqm
- woven polyamide outer layer, very fine yarns, construction 10d x 7d
- 60 gg knit backing
- durable and soft feel fabric
- hydrostatic head: 20.000 mm, breathability 20.000 g/sqm/24h



Trends in functional fabrics



thank you for your attention!

Presented by Performance Days/
Ulrike Arlt