



MDS
GROUP



INTER-ACTIONS

AW24/25

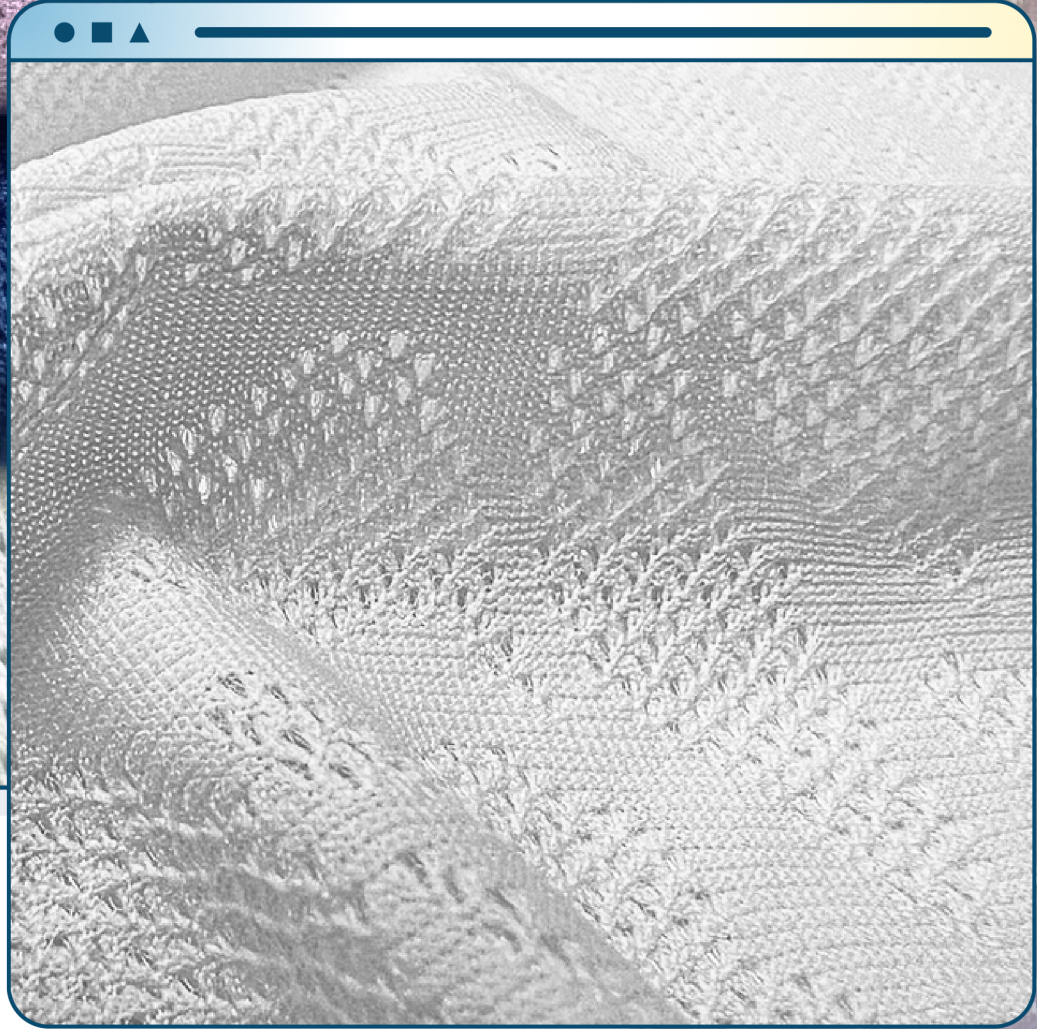
- Uplifting Lightweights
- Petit Origami
- Serene Daydream

- Folk Stories
- Neo Classics

- Main Character Energy



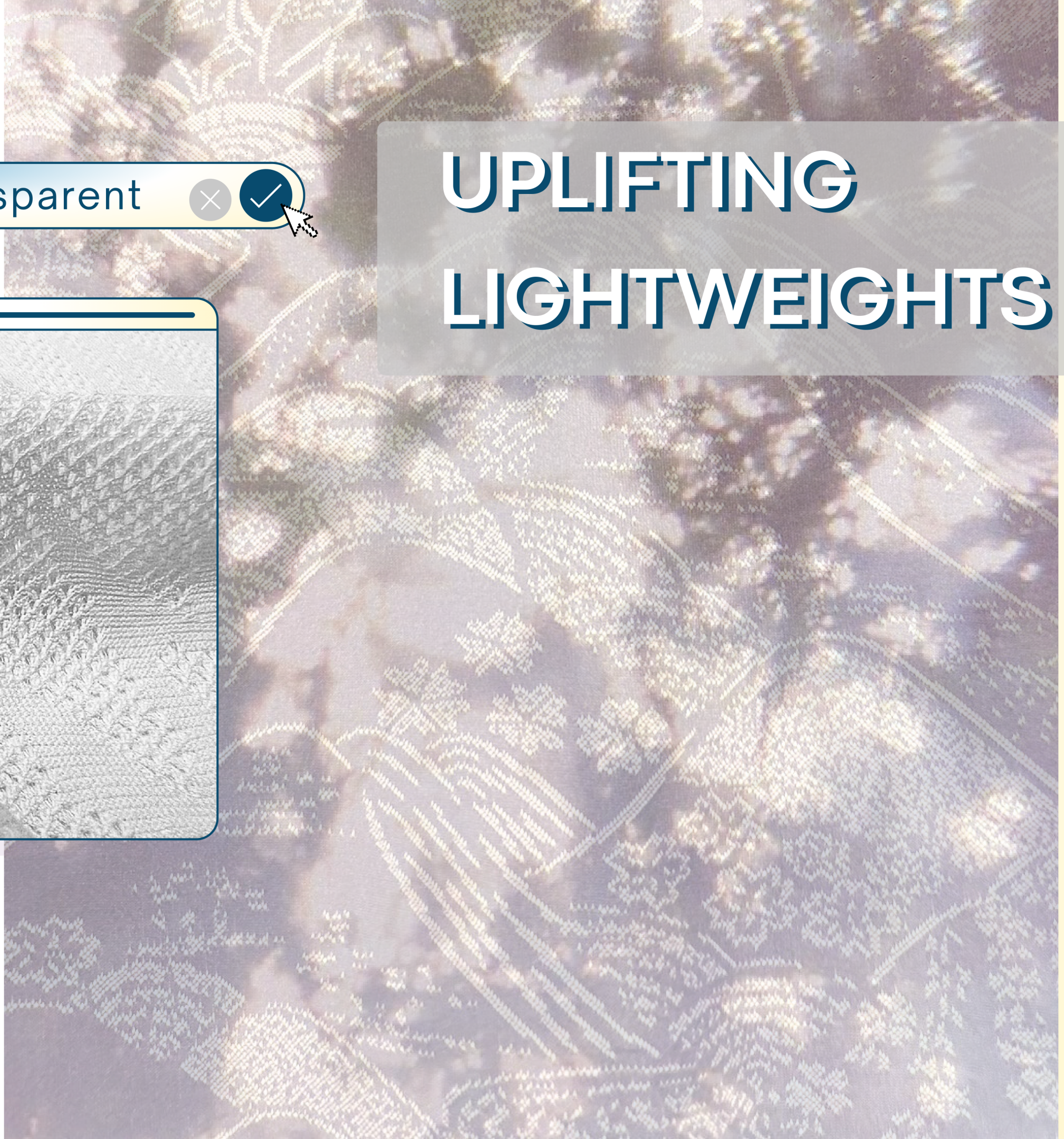
Transparent



UPLIFTING LIGHTWEIGHTS

Computer Jacquard

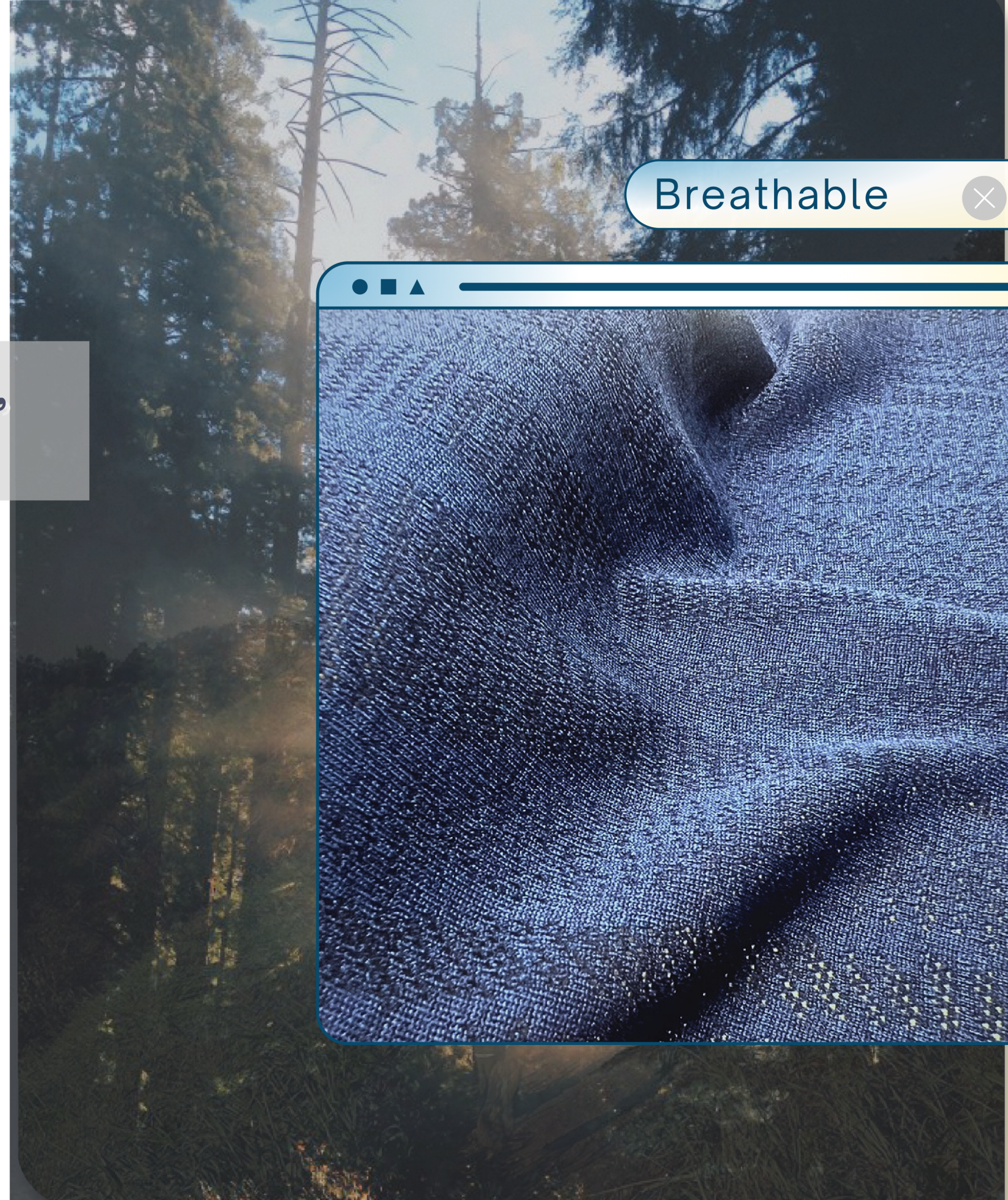
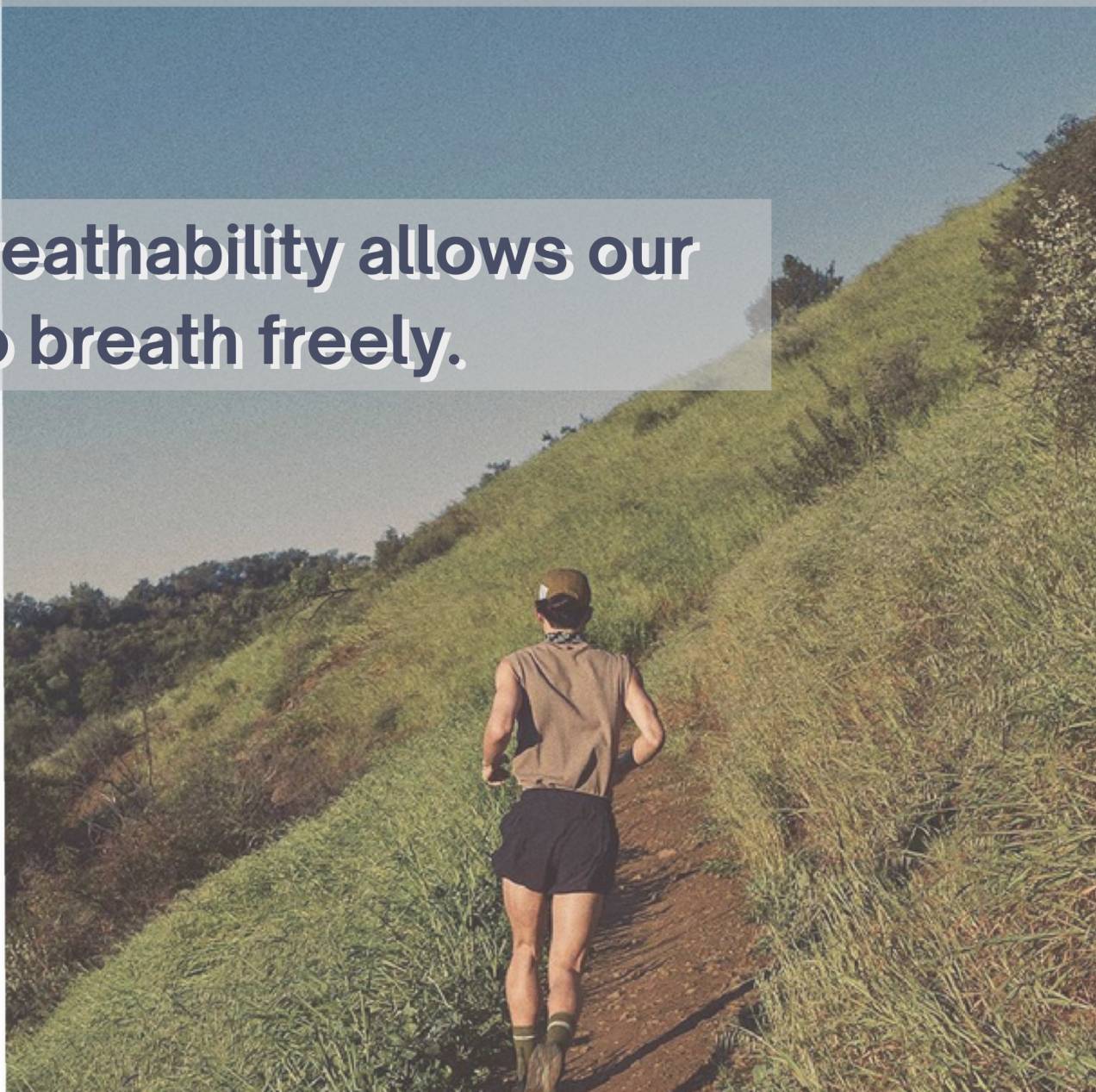
The variability of light permeability in knitted mesh creates delicate translucent patterns.



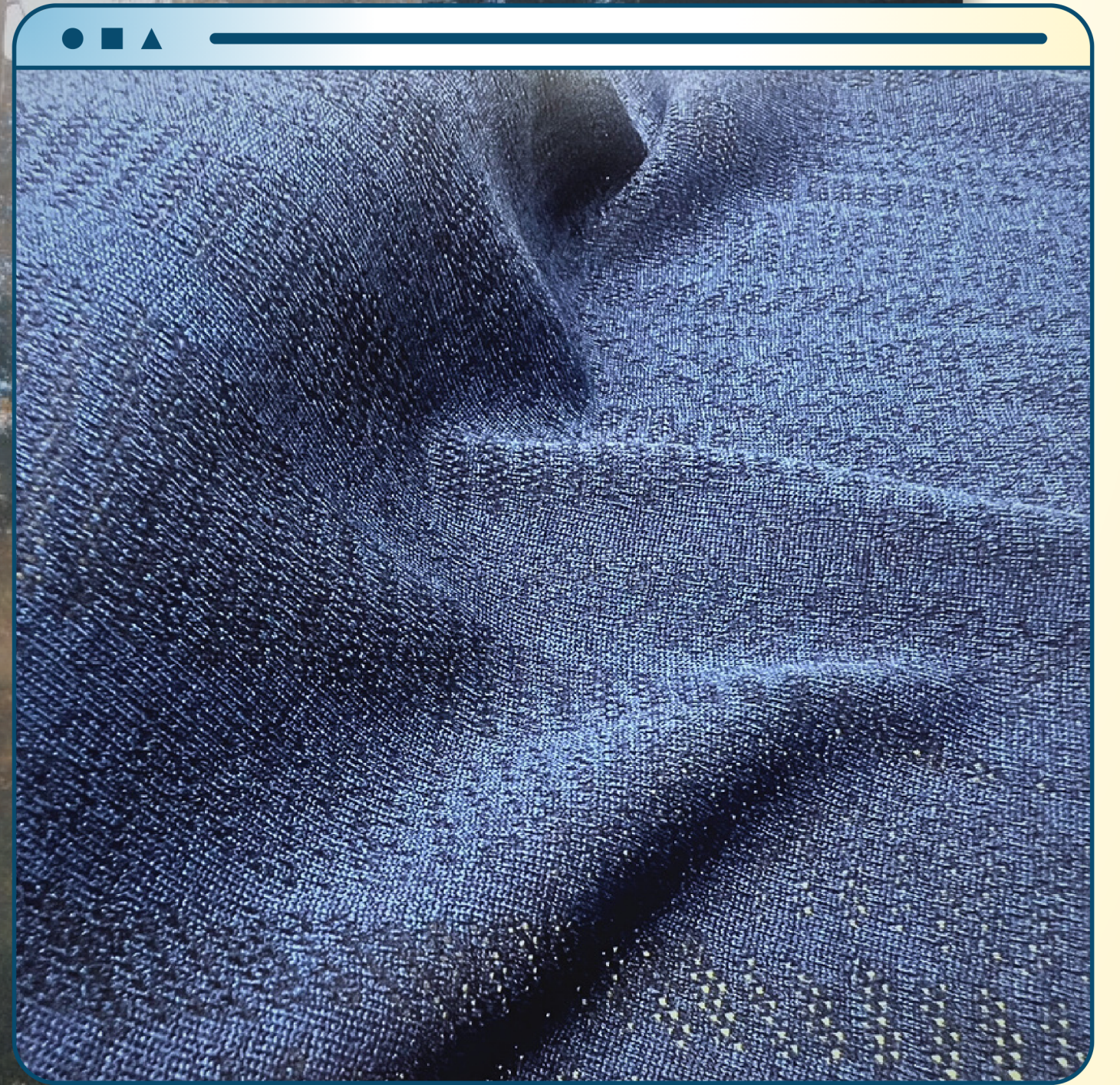


Various texture with light and soft hand feel, presenting a dichromatic visual effect.

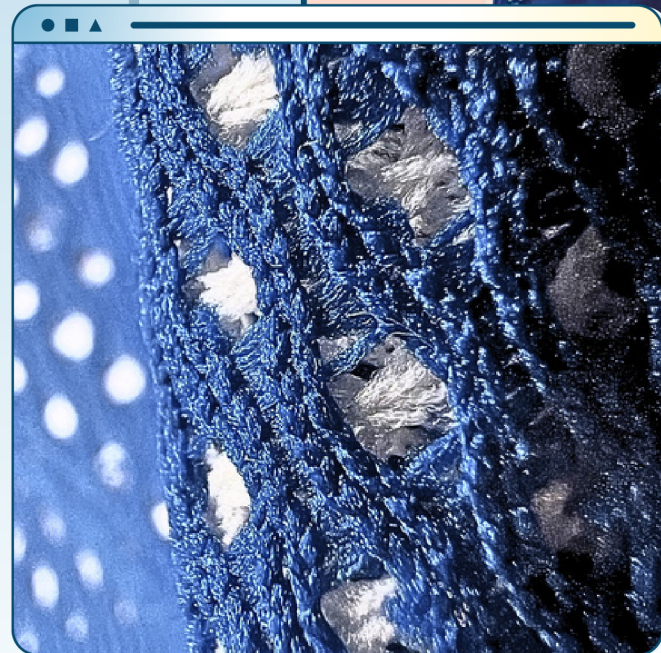
The breathability allows our skin to breath freely.



Breathable

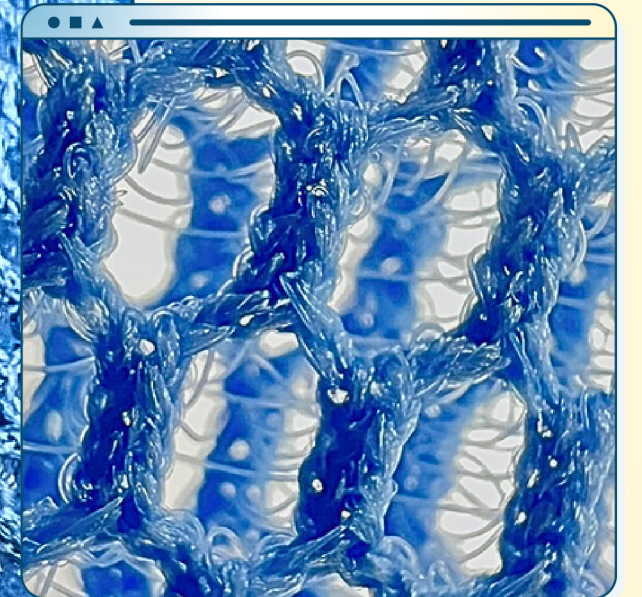
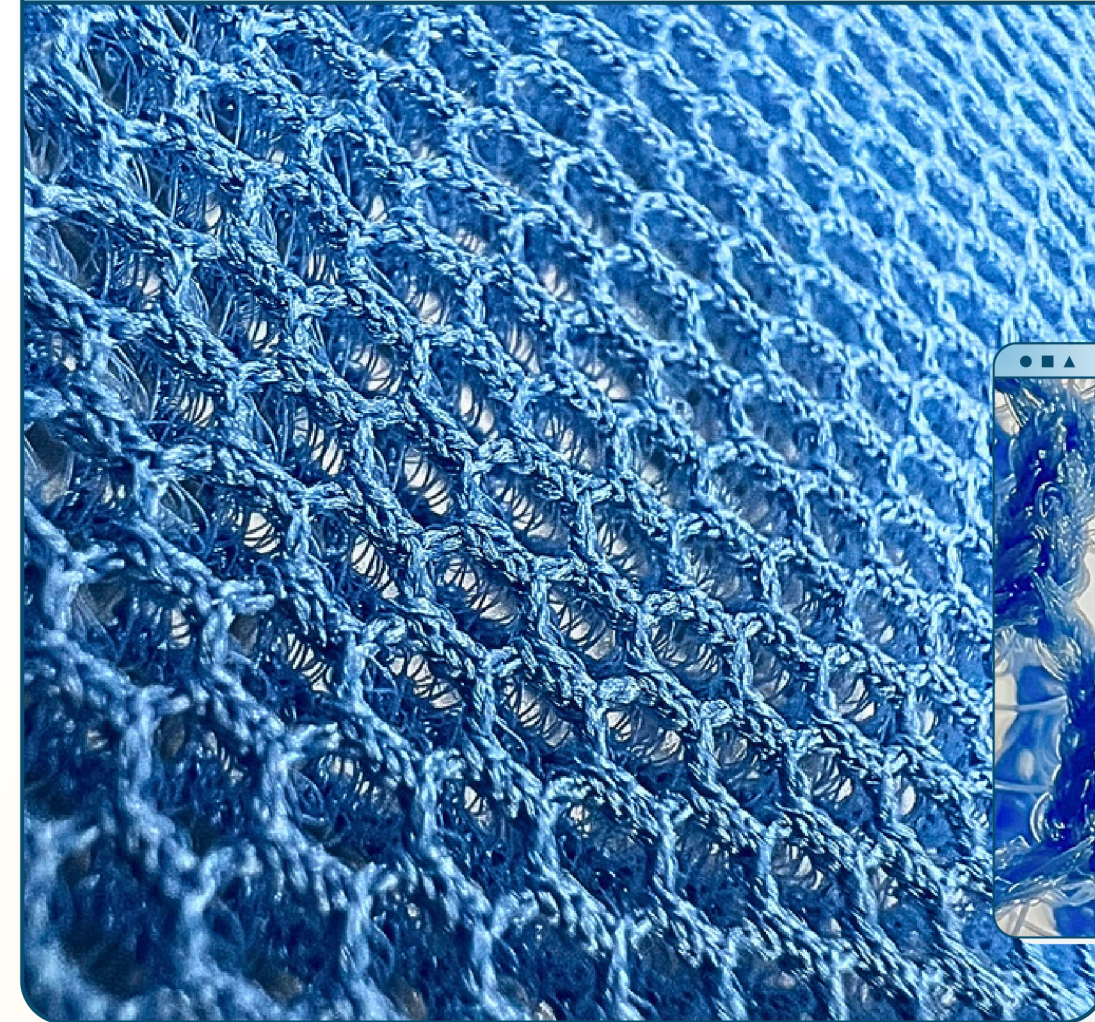


Dual-layer mesh



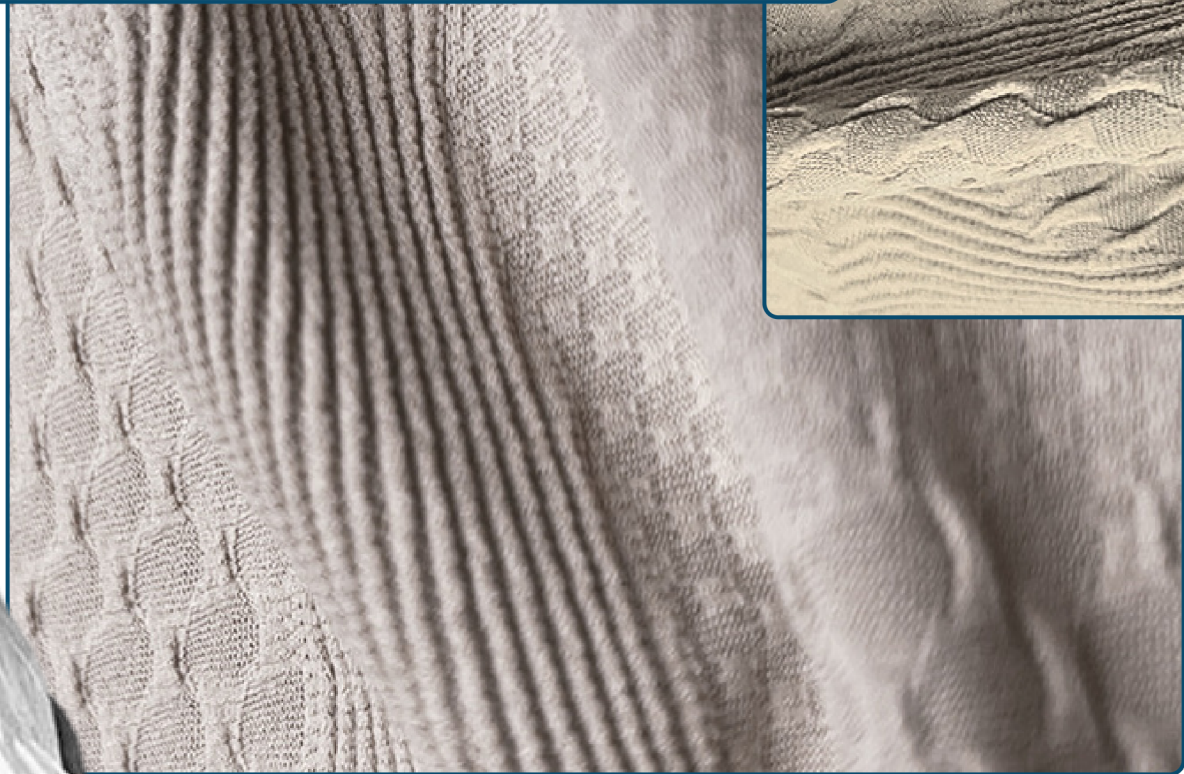
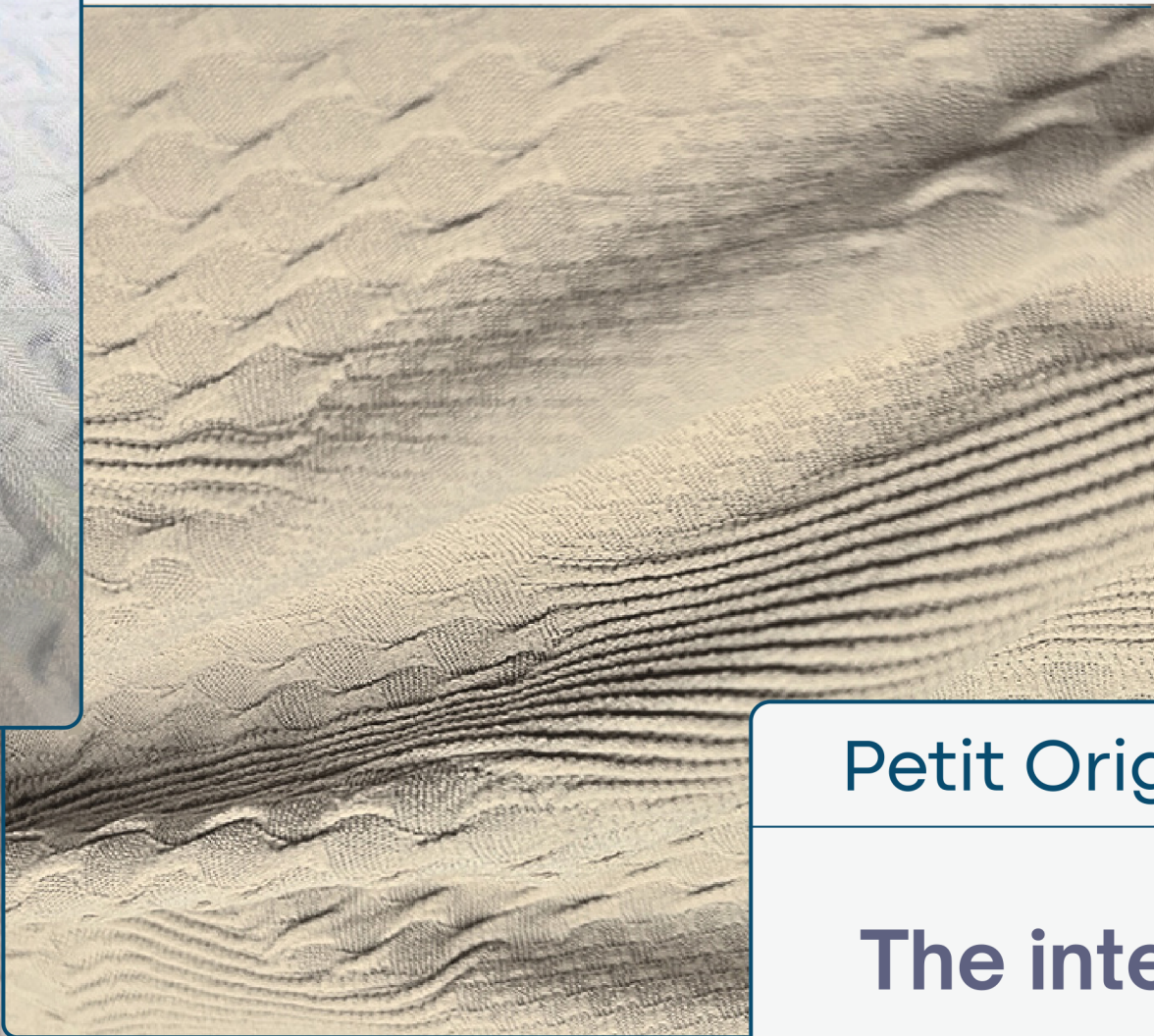
Tricot Jacquard

Sandwich mesh fabric



The dual-layered mesh knitted fabrics creates a 3-dimensional visual effect while enhanced the breathability of the fabrics. When unique designs are applied onto the dual-layered fabrics, it creates a visual art of fun illusion.

PETIT ORIGAMI



Petit Origami

The interaction of different folding patterns created a multi-layered effect as delicate as Japanese origami, presenting a visual feast.

FENC TOPGREEN BIO3 PET

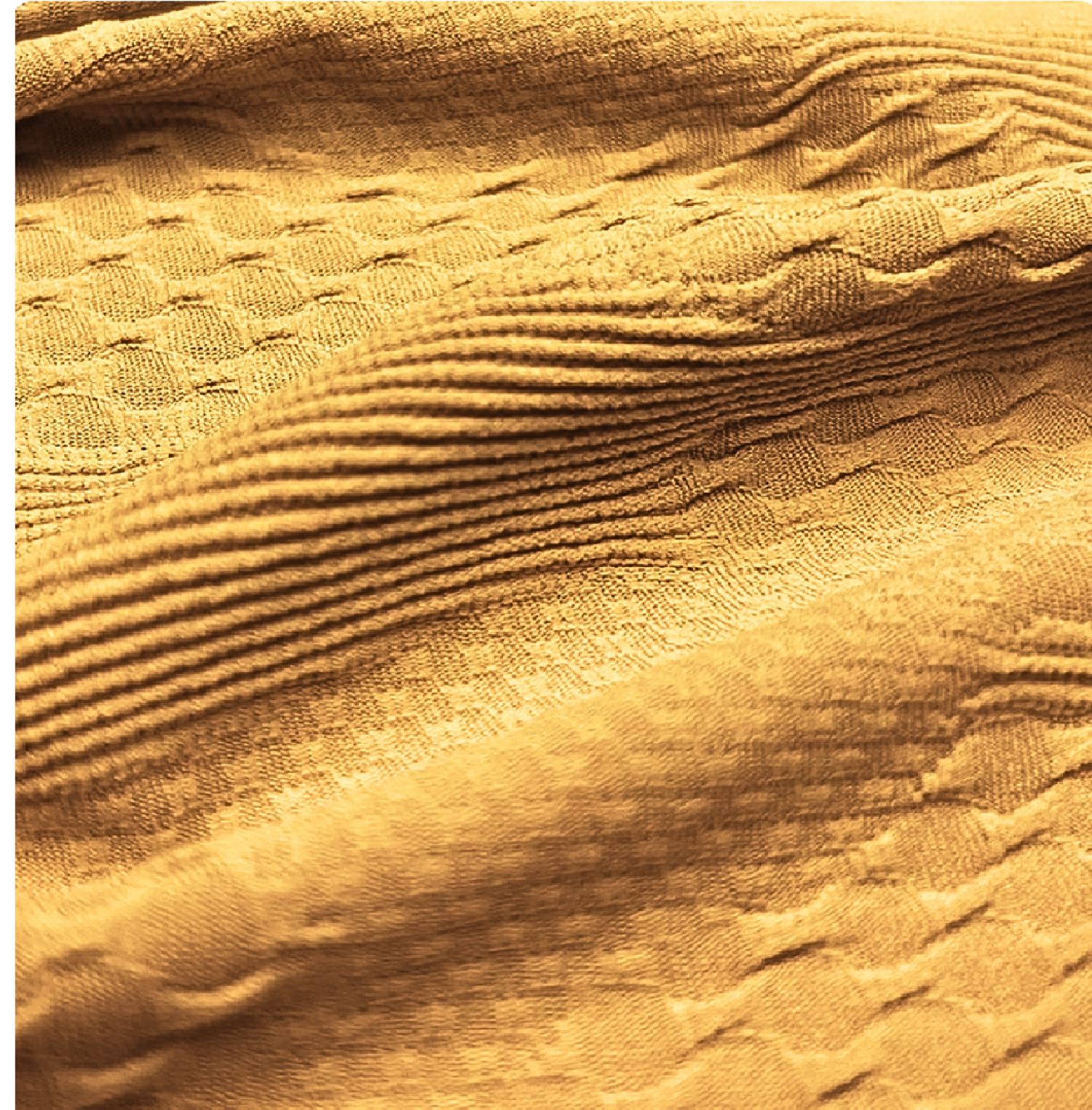
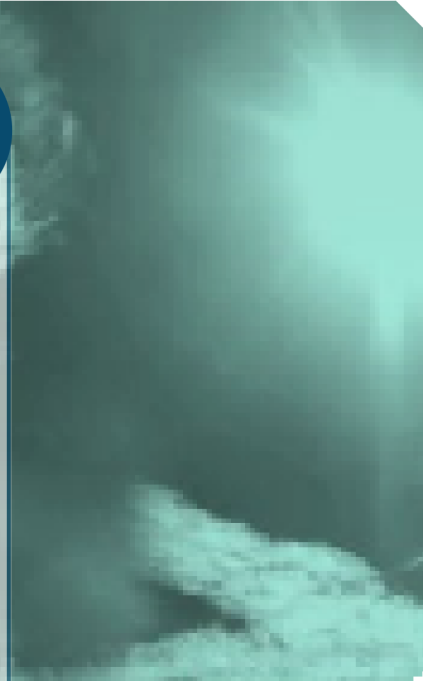


Industrial exhaust contributed greatly to urban air pollution.

We capture the carbon particles in exhaust gas, transform them into raw material and spun into yarns, reducing carbon footprint.



-24%GHG



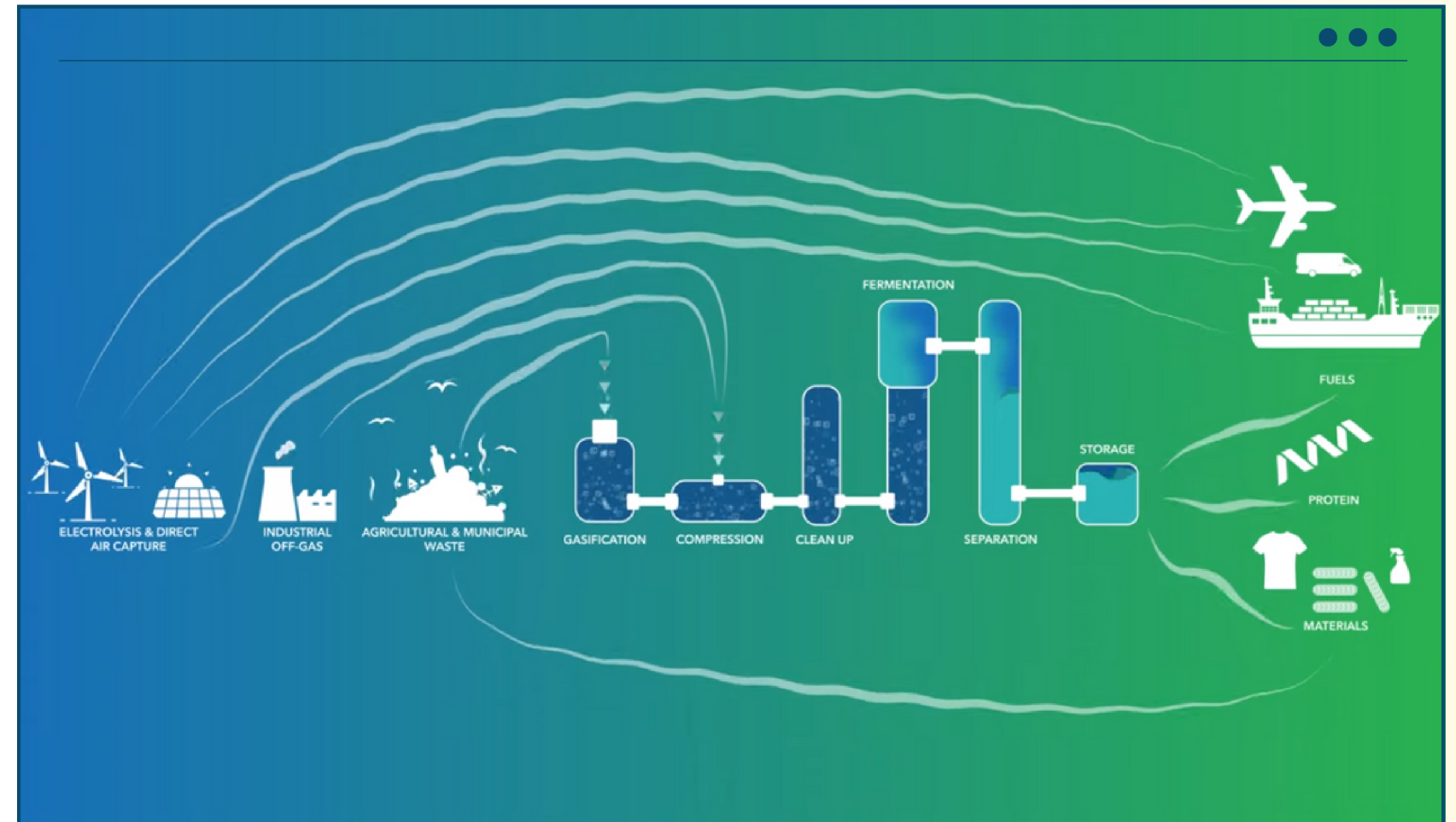
Q waste gas recovery X

Q CO

Q CO₂

Q Ethanol

Capturing carbon particles from the air such as carbon dioxide and carbon monoxide and transform them into ethanol.



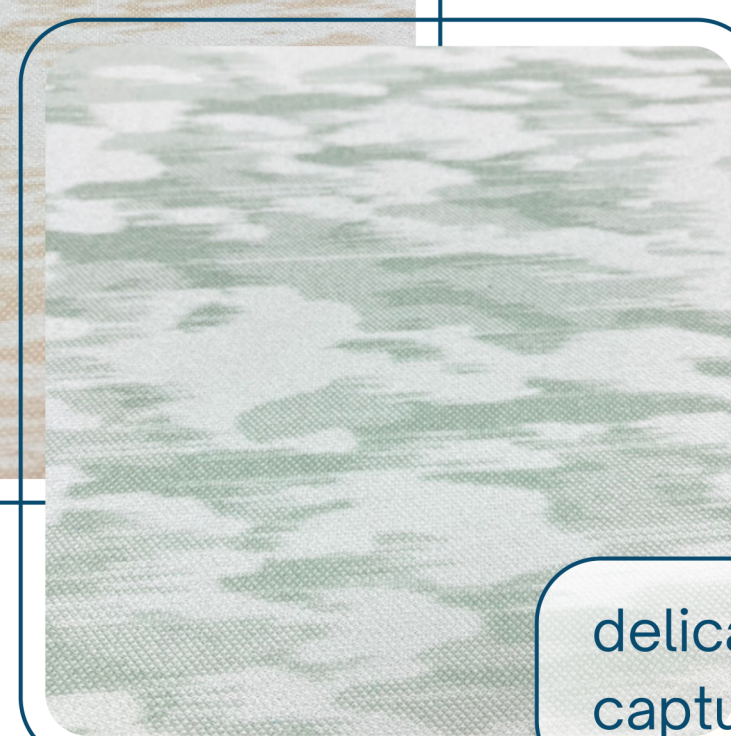
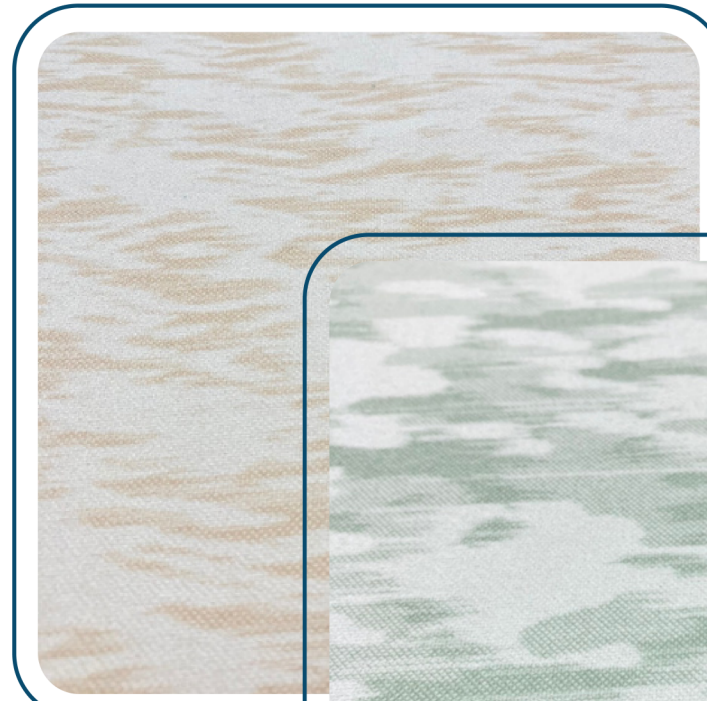
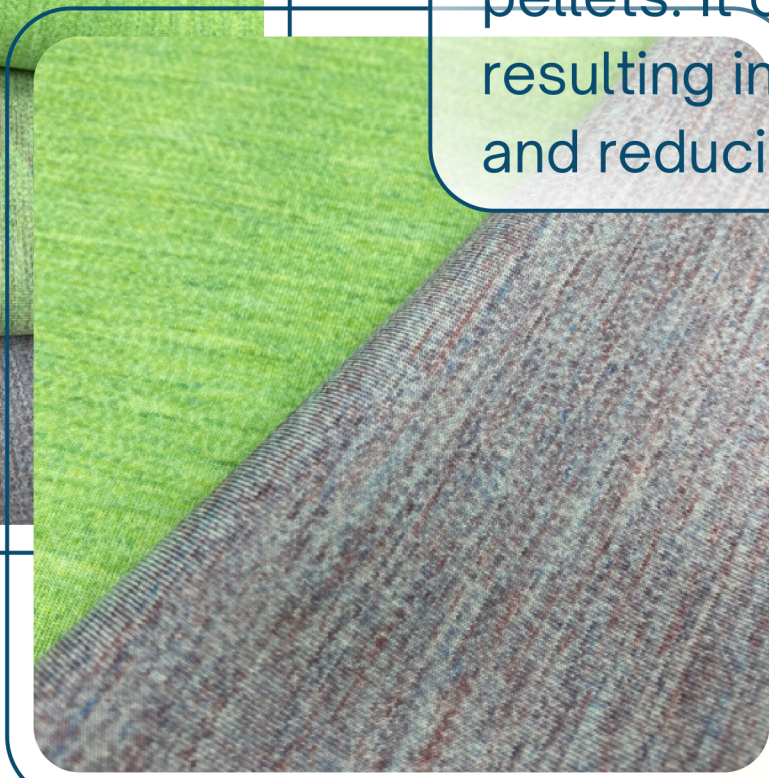
Regarding the yarns

The carbon particles captured from exhaust gas emitted from factories are placed in containers filled with microorganisms. The microorganisms digest these carbon particles into ethanol, which then go through chemical dehydration process and are transformed to polyester, where they are made into polyester yarn.

SERENE DAYDREAM



Waterless yarn dye during color pellets. It can save 90% water usage, resulting in better fastness of washing and reducing the likelihood of fading.



Energy-efficient yarn only use one dye to display two tones.

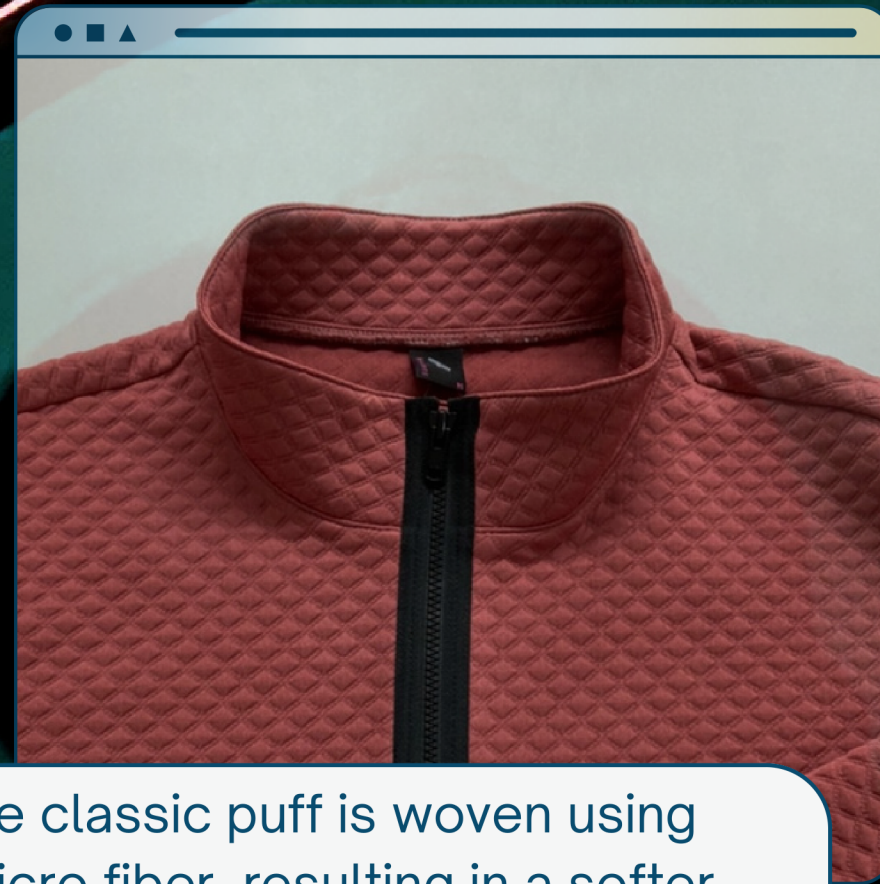
delicate computer jacquard perfectly captures the beauty of clouds.



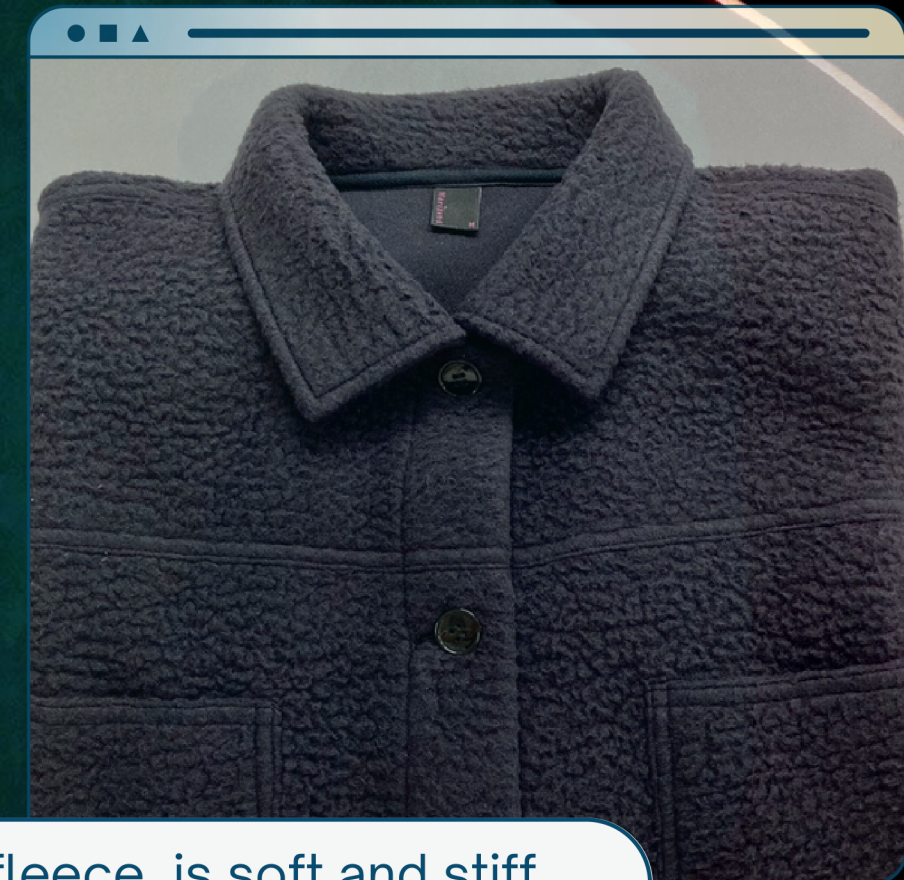
HEAT NEW MEMBER



The delicate mini jacquard combined with brush adds more warmth to the fabric.



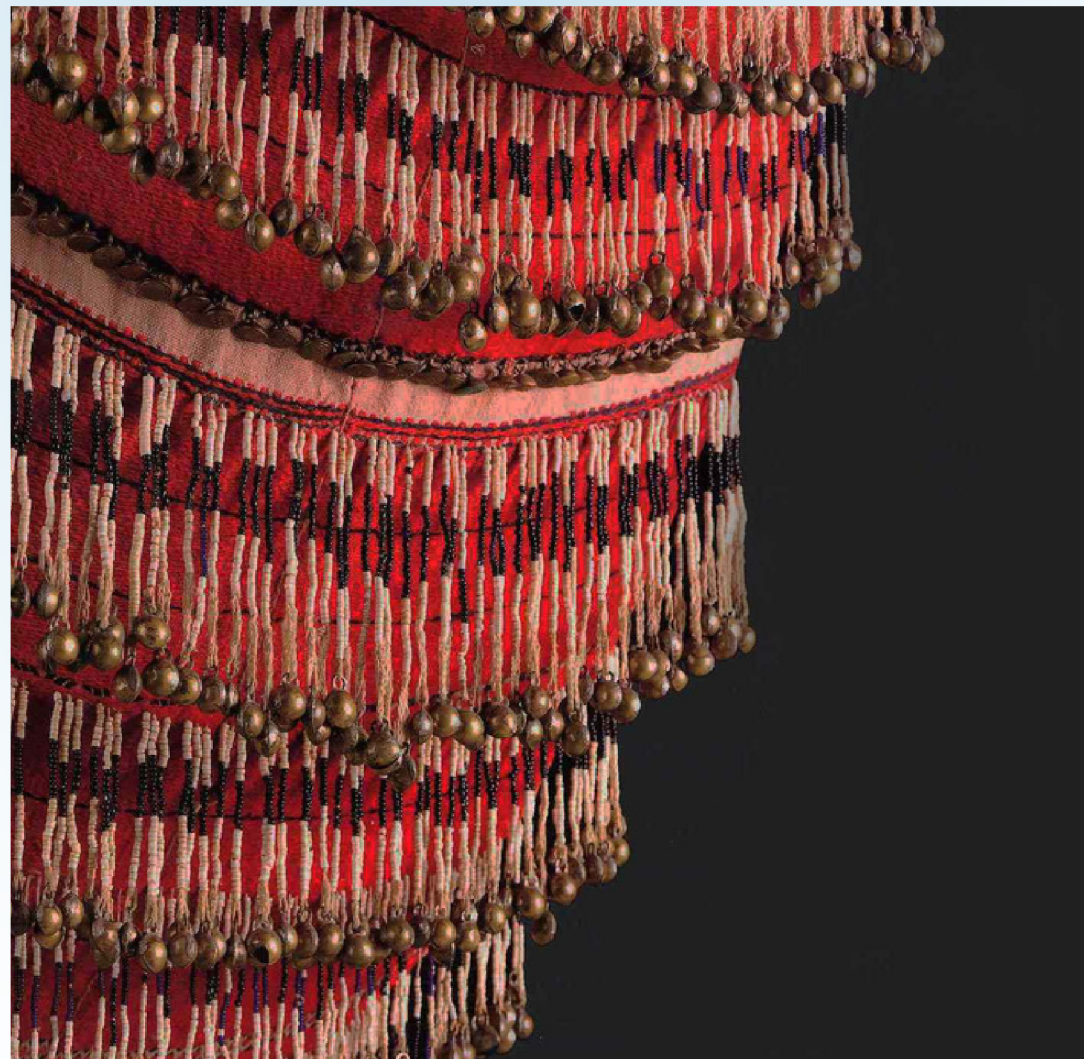
The classic puff is woven using fMicro fiber, resulting in a softer and smoother surface.



Polar fleece is soft and stiff, Suitable for making jacket.

FOLK STORIES ● ● ●

We search new fibers with different stories, such as pineapple, comforter, palm, wood. They produce carbon emissions and support the world to be a better future.



pineapple leaf yarn



cabon zero tencel & modal



remix dreamer



Cotton cozy



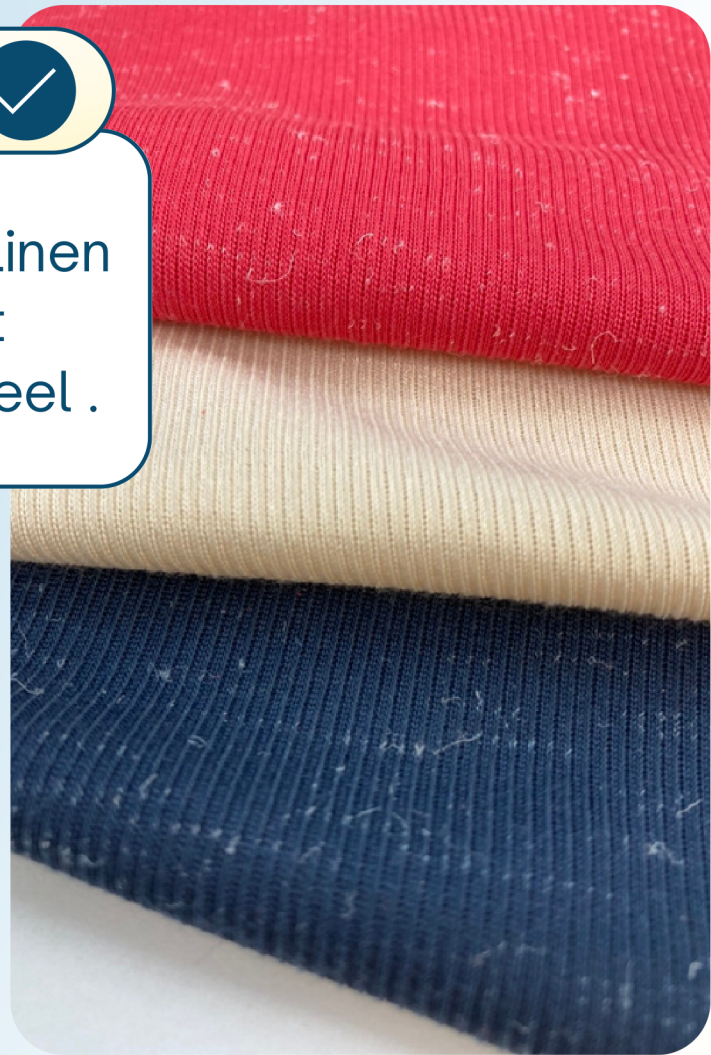


Moisture content

Pineapple leaf fiber like Linen fiber.They have great moisture and stiff hand feel .

Zero agri waste

Zero Agri Waste : Reduce greenhouse gas from burning agri-waste.



Farmer welfare

We buy pineapple leaf from farmer to increase farmers' 20%~30% income.



PINEAPPLE LEAF

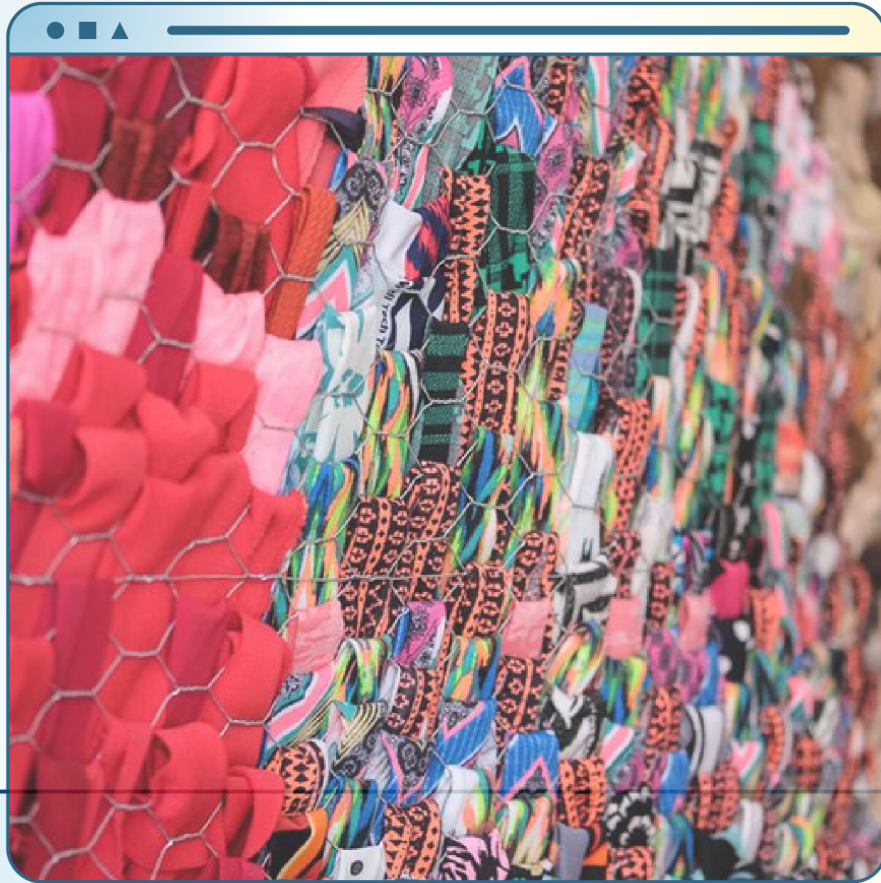


REMIX DREAMER

RECYCLE COTTON+RECYCLE POLYESTER



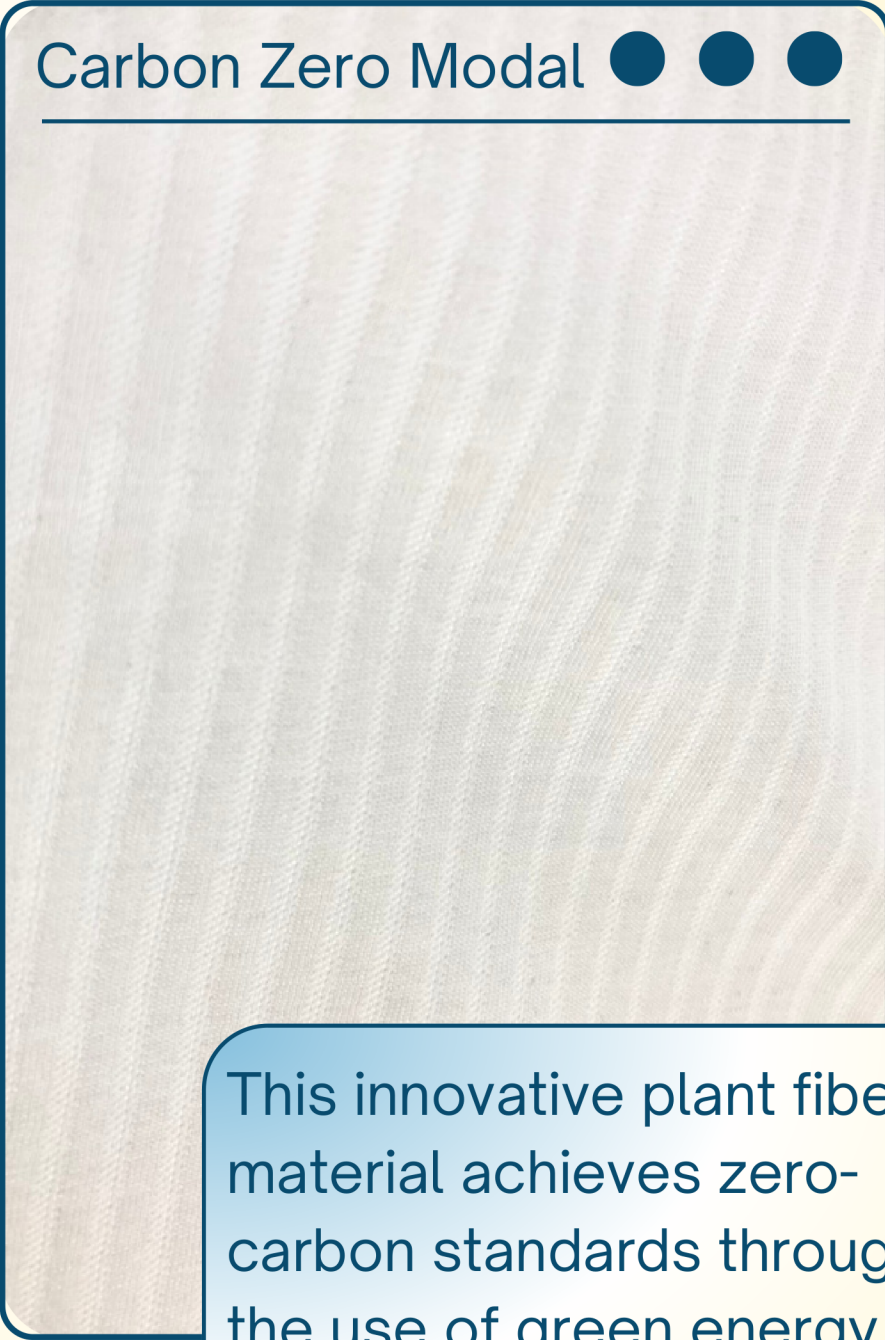
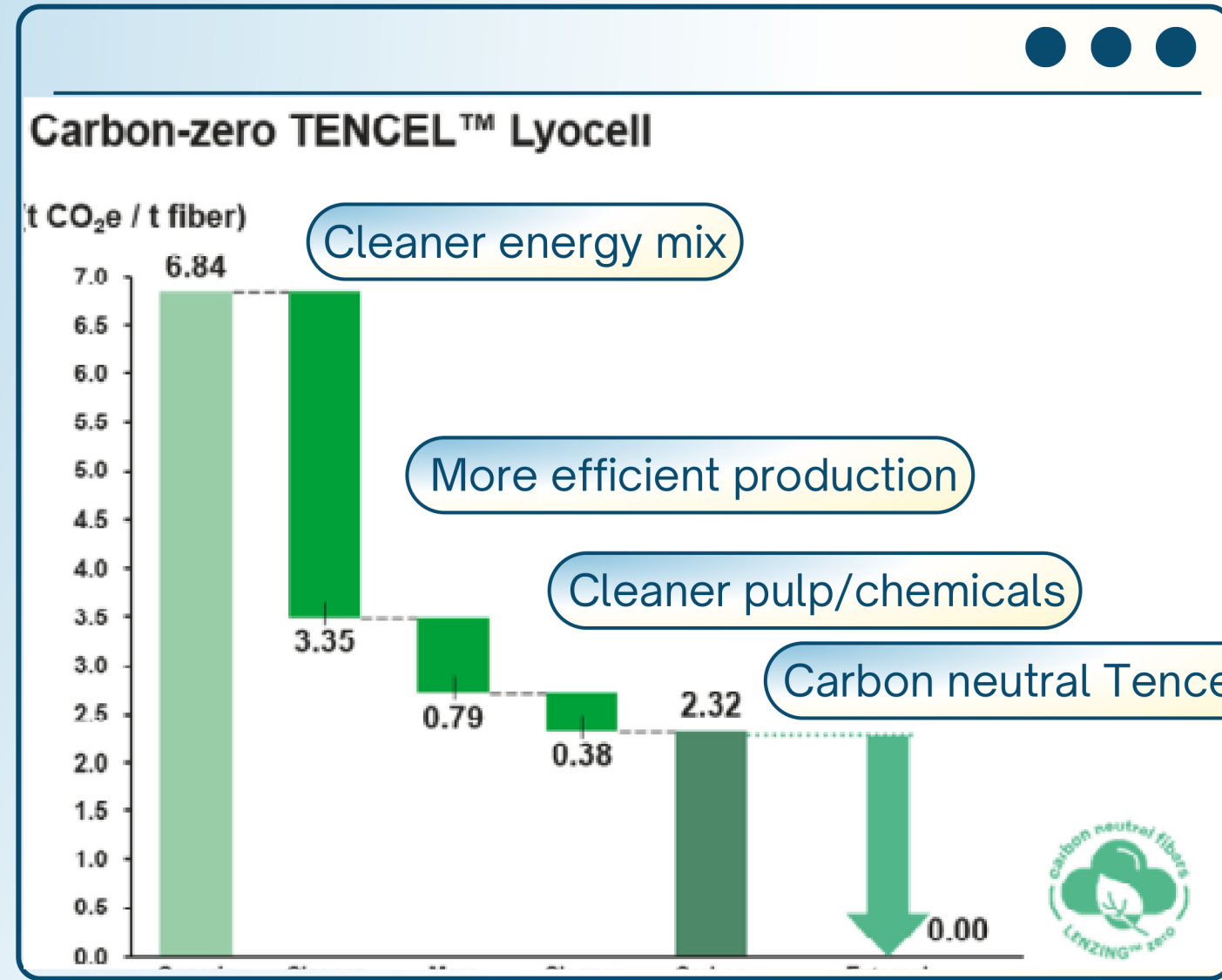
Recycled cotton made from comforter, pillow's filler that are dream's carrier. Recycled polyester made from factory tailings, waste yarn ,use them to new born.
Gather all sectors of power to realize the vision of sustainable development .



Carbon Zero

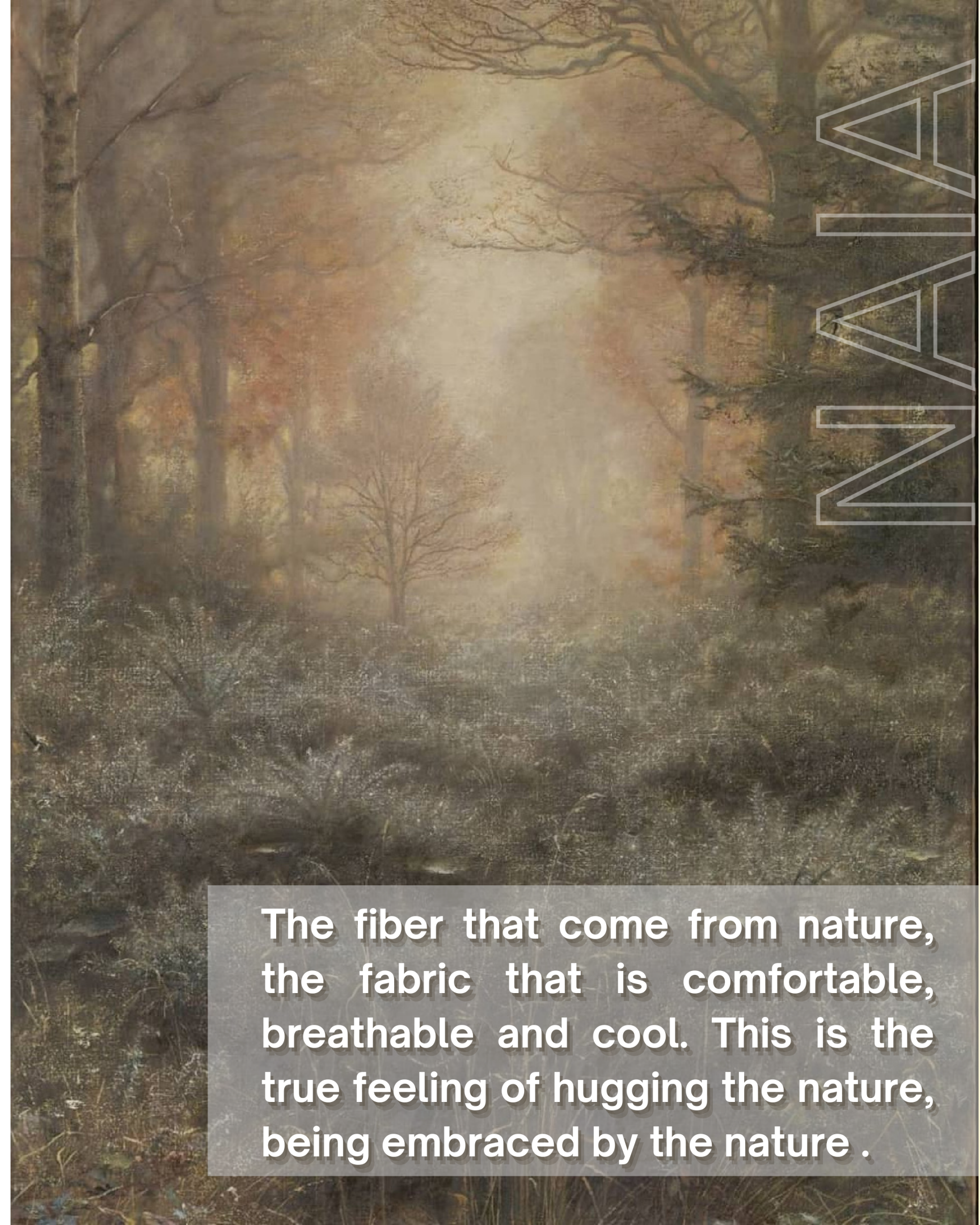
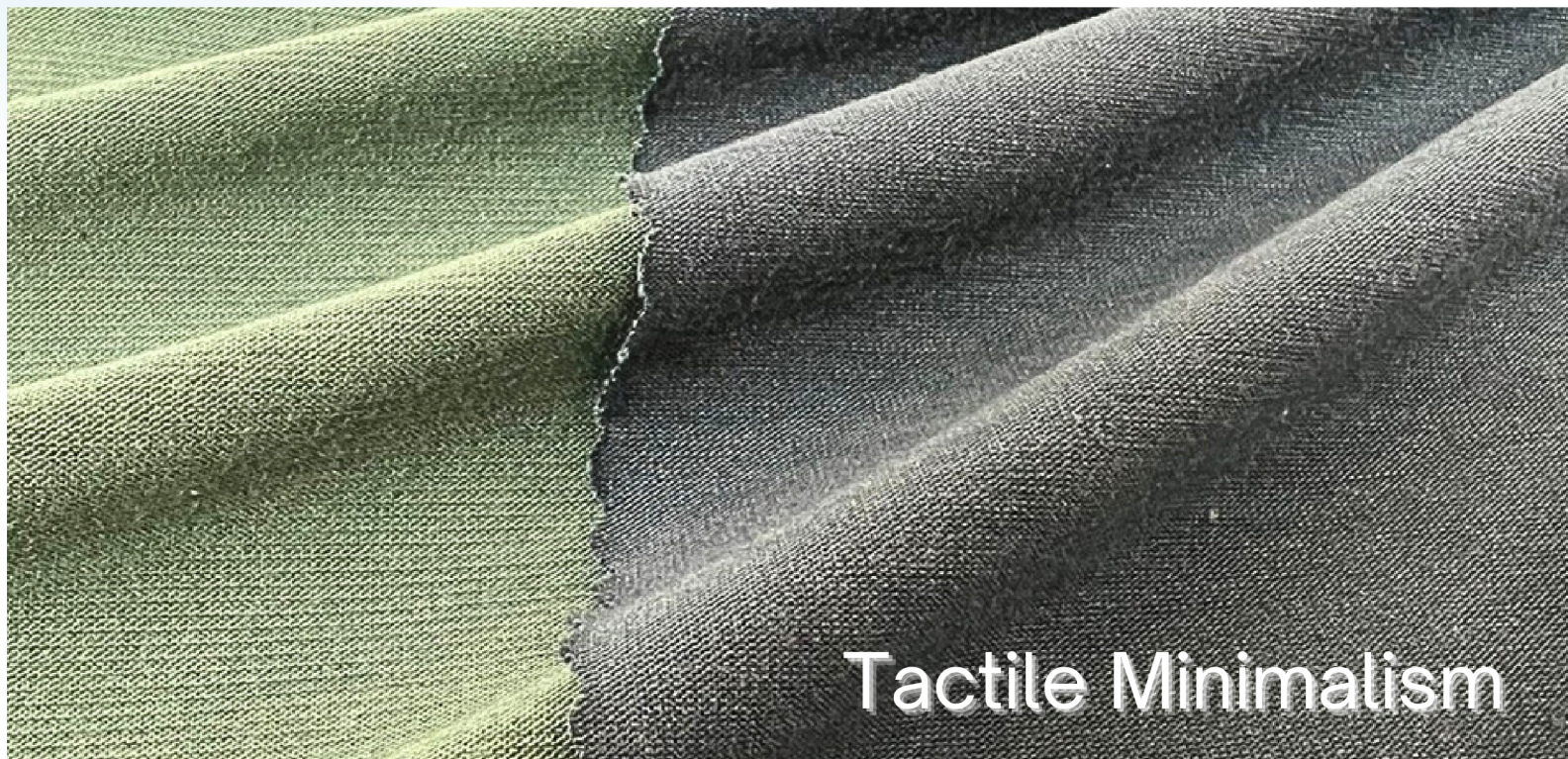
Carbon Zero Tencel
Carbon Zero Modal

Global common goal: By 2050, carbon emissions must be reduced to the levels of 2005, or else the crisis of greenhouse effect cannot be prevented.



This innovative plant fiber material achieves zero-carbon standards through the use of green energy generation and pollution reduction.

≡ NEO CLASSICS



The fiber that come from nature, the fabric that is comfortable, breathable and cool. This is the true feeling of hugging the nature, being embraced by the nature .

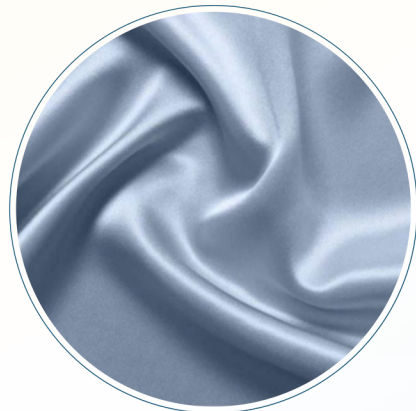


SPUN NEW LOOK

MODAL+DOPE DYE



Dope Dye reduce the water usage and pollution associated with dyeing.



Modal is renowned for its silky touch.

Y's

Woven from a lot of Y-shaped cross-section yarns, the Y's has great moisture-wicking, as well as the soft touch of spun. It also enhances durability.



COTTON COZY

AU COTTON



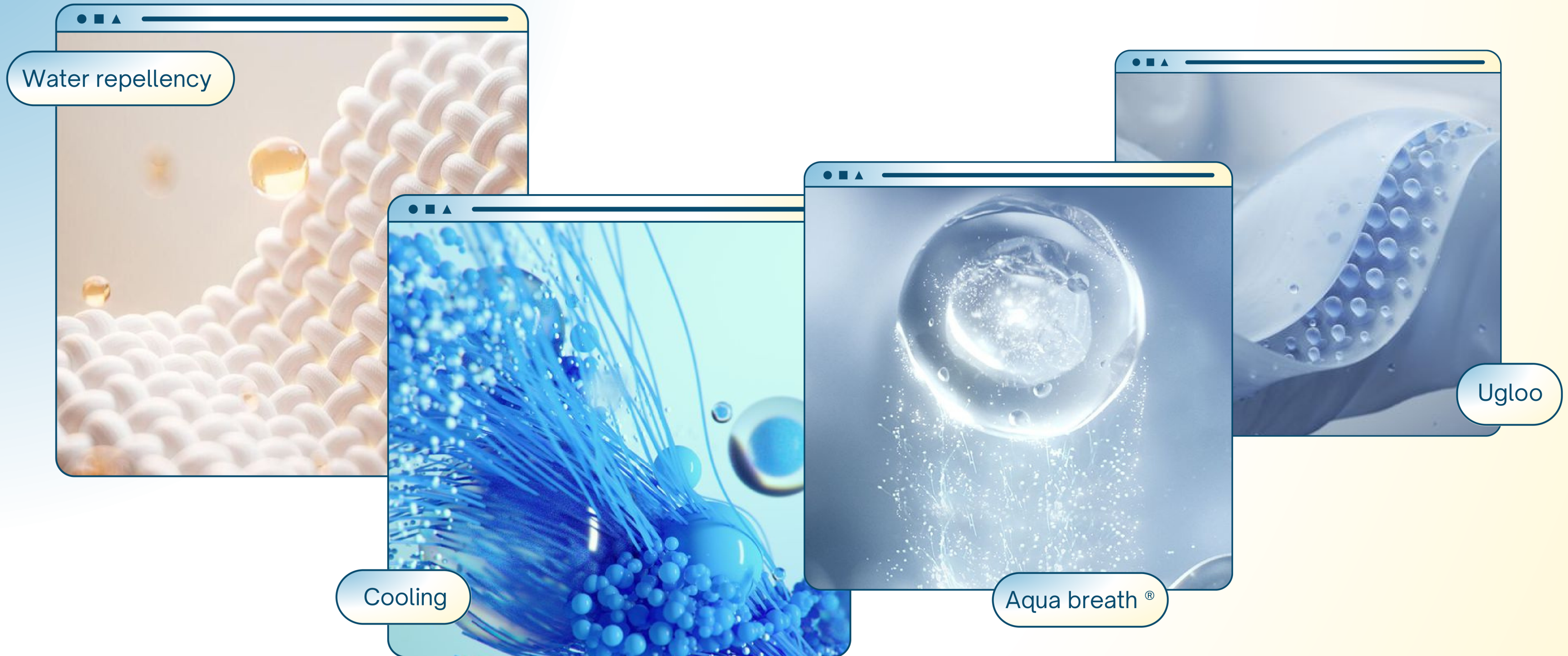
*Cotton from Australia boasts superior quality due to its extended exposure to sunlight.
Australian cotton fibers are longer, and more durable than other origins.*

CVC+NEW PIN



*CVC yarn have cotton's touching and wicking.It also can assist skin breath .
New pin has great elasticity and can replace spandex.*

MAIN CHARACTER



Functional yarns can become the focus on fabric, transforming clothing into special meaningful and purposeful. This is time when people, technology, and fabric engage in a dialogue.

UGLOO

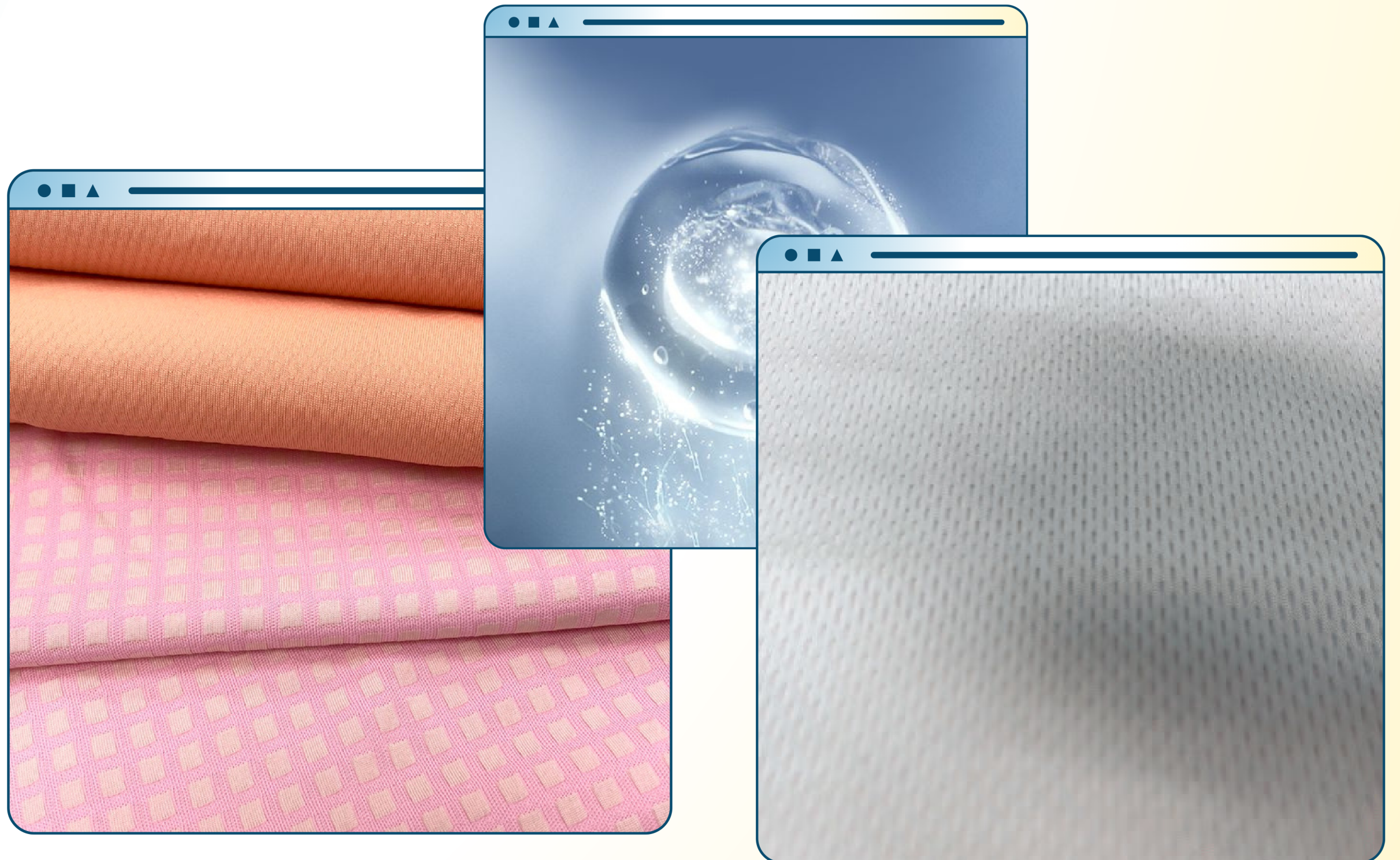
Made by Recycle PET # Mechanical Stretch
Feather weight # Anti-UV # Anti-seethrough



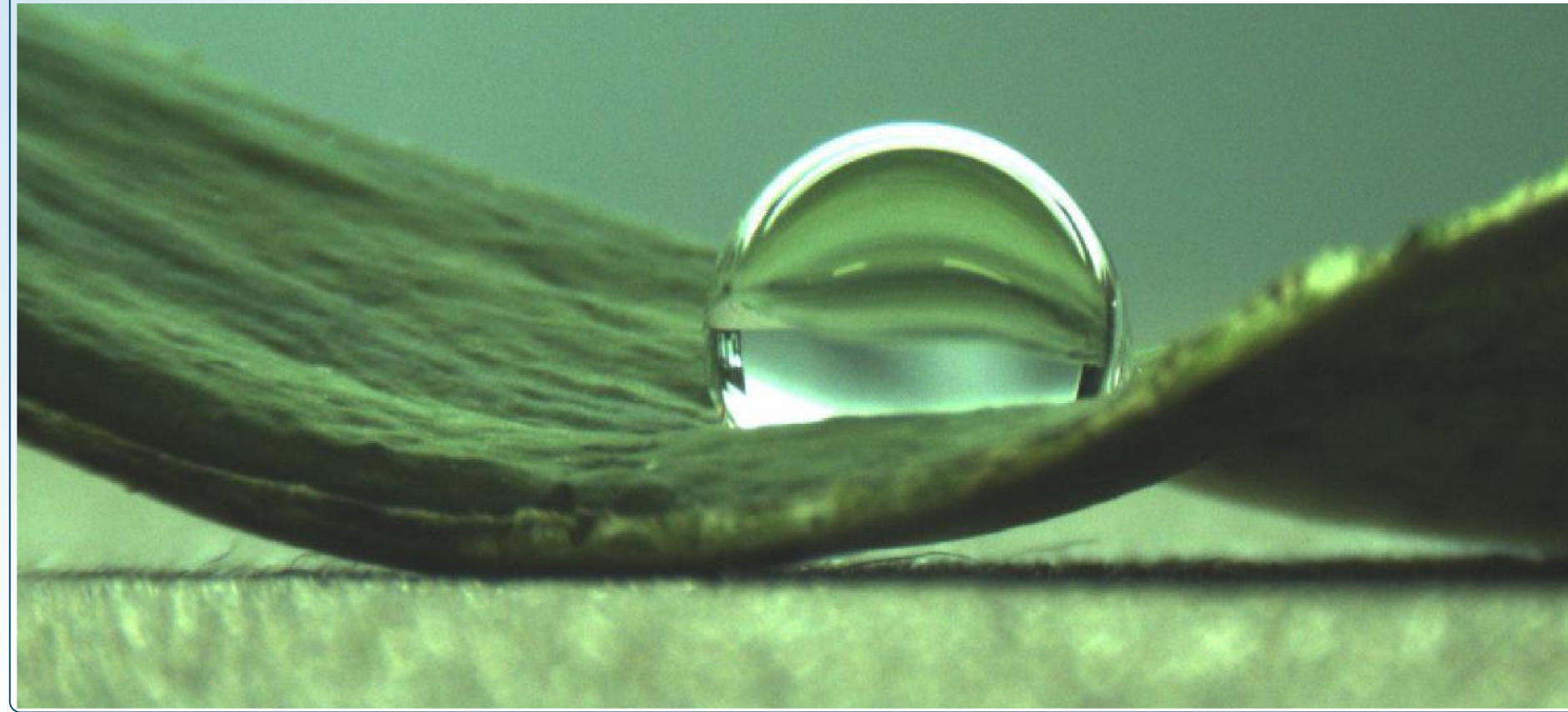
Unique yarn “shin sigma” knitting the Ugloo. It has UV-cut and hygroscopic features. Just like a yurt, it assists you to live in the sun.

AQUABREATH®

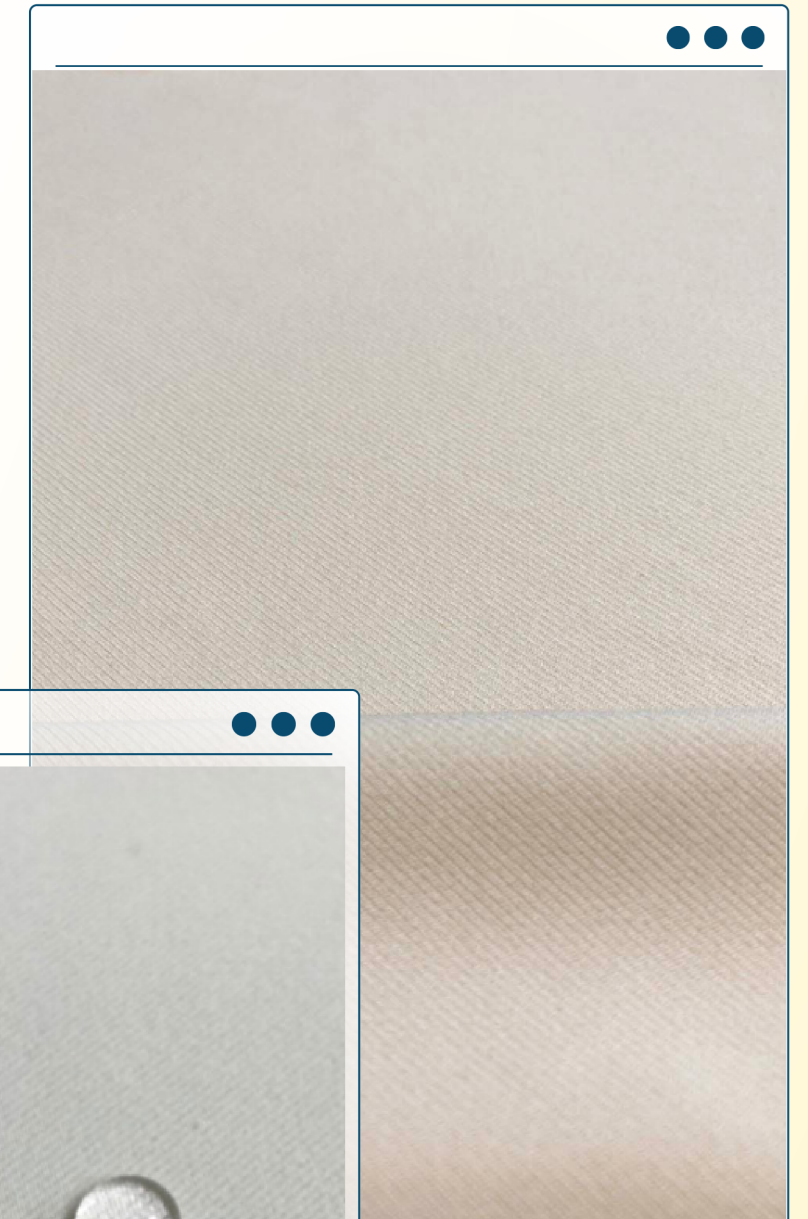
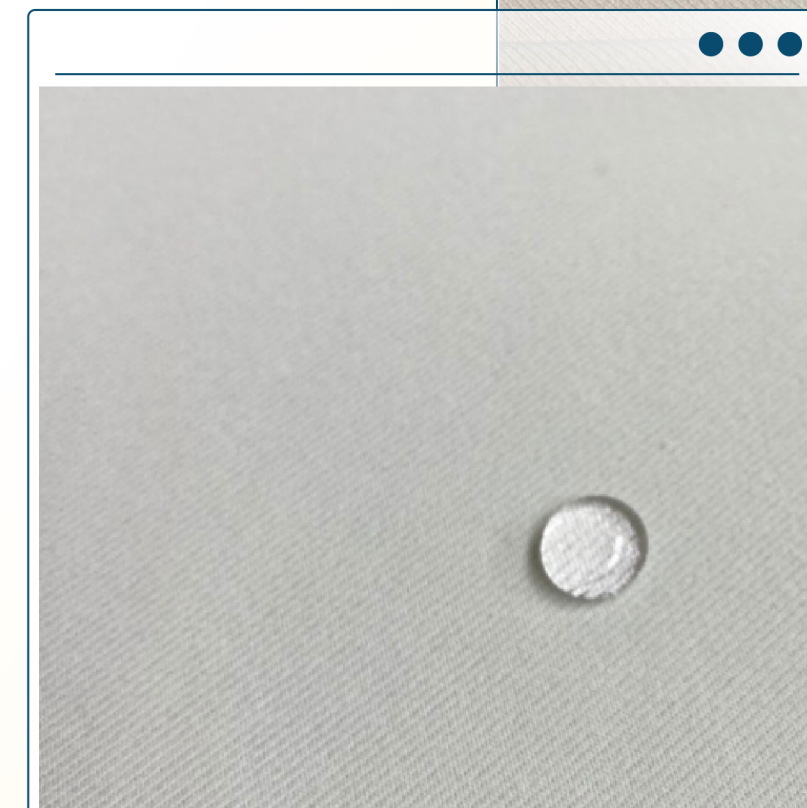
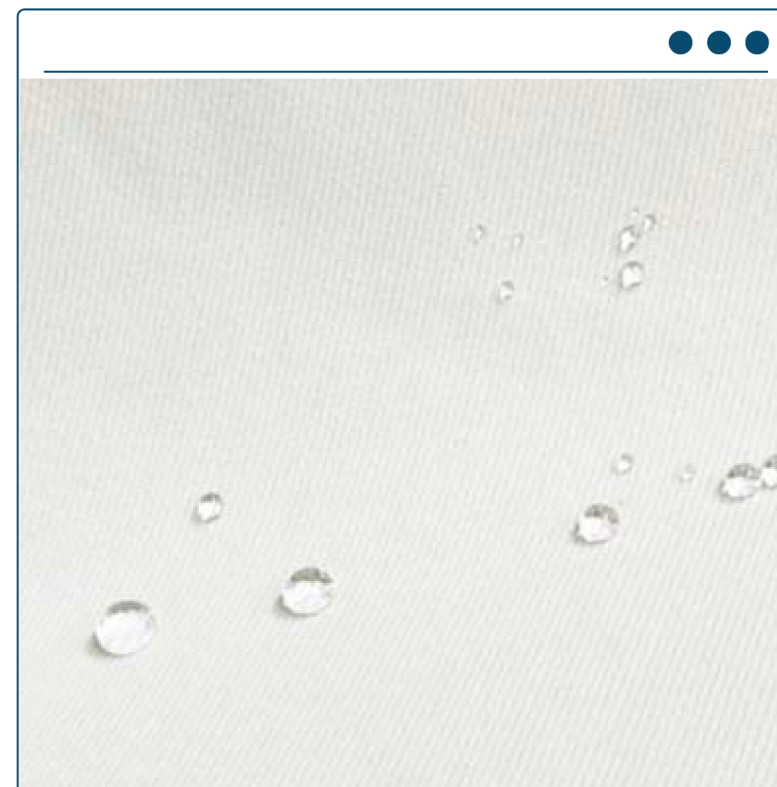
The moisture-absorbing and stretchable yarn will stretch when it absorbs water, creating extremely fine pores in the fabric.



CO WATER REPELLENCY ...



- 100% Fluorine free
- Acrylates copolymer
- Extra Durable water repellent
- Keep function even after repeat washing (25 times wash)
- Eco – friendly
- Dyeable polyester with excellent hand feel
- Easy clean





GRAPHENE



Graphene's far-infrared energy can promote blood circulation in body, providing heat-retaining effects. Improved blood circulation helps maintain function of our organs, resulting in physical and mental balance.



Digital jacquard knit by graphene fabric. Good look and maintain great heat function.