

A decorative border of green foliage with small red flowers surrounds the central text area. The background is a light grey gradient with a white diagonal shape on the right side.

– New –
Material Brief

2025

Hello, there.

It's nice to see you again! We hereby propose our latest material collection and pleased to introduce that our new catalog is divided into 2 parts as follows.




– New Concept

Characterized by most intense discussions of product categories, such as eco-friendly raw material, popular texture, and composite product.

– Best Collection

In this part, you will find a variety of different fabrics that made of knitted and woven. The application season covers spring/summer and fall/winter.





– **New Concept** –

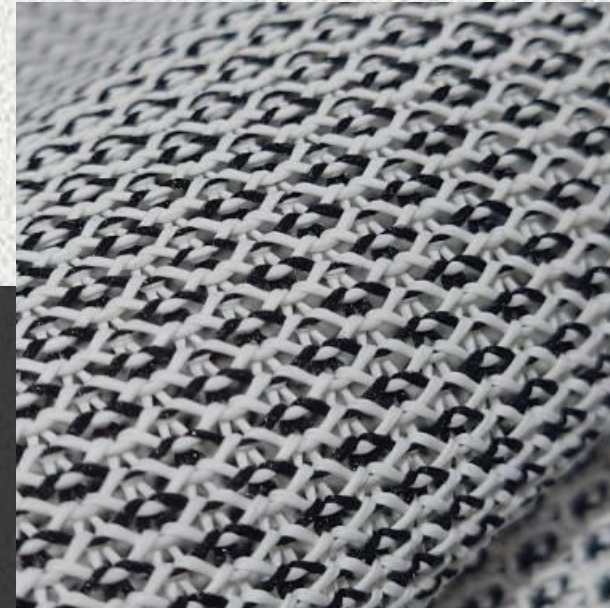


– **New Concept**

Sustainability | Eco-leather

Eco-leather is synthetic leather made by recycling PVB film from the windshields in scrapped cars. It's an eco-friendly solution to lower the impact on environment, also a new choice to replace genuine and synthetic leather.

The recycled PVB material we use is verified by GRS, and the final product complies with REACH regulations.



GS25-663T
44" 375G/YD

90% Recycled PVB
Coated Yarn + 10%
Dope Dyed Polyester

GS25-664T
44" 546G/YD

100% Recycled PVB
Coated Yarn



– **New Concept**

Sustainability | Carbon capture technology

The raw materials we use are industrial emissions captured from steel mills, then converted industrial emissions into platform chemical for making PET.

Apx 16% of carbon footprint can be saved if compared to virgin PET manufacturing.



GS25-674T
56" 550G/YD

66% Recycled Polyester+34% Carbon Capture Bio Based Polyester

GS25-678T
56" 217G/YD

100% Carbon Capture Bio Based Polyester



- New Concept

Sustainability | Bio-based raw material

Instead of using petroleum resources, plant-based feedstocks and agriculture waste can play as renewable resources for making PET.

Apx 3.2% of carbon footprint can be saved if compared to virgin PET manufacturing.



GS25-612T
62" 285G/YD

83% Bio Based
Polyester
+17%Spandex

GS25-687T
52" 510G/YD

50% Recycled
Polyester+50% Bio
Based Polyester



– **New Concept**

Sustainability | Textile waste

Cutting scraps, overstocks, unwanted textiles have become an inevitable result for us in regular production.

Our action plan is to put the waste into reproduction, we can use both greige and colored fabrics as raw materials. In this way, we can slow the demand for using virgin materials.



GS25-616T
56" 375G/YD

100% Recycled Polyester(20% Crushed Greige+80% Bottle Flakes)

GS25-669T
58" 450G/YD

73% Recycled Polyester(20% Crushed Greige+80% Bottle Flakes)+27% Recycled Polyester





GS25-690T
48" 190G/YD

85% Polyester+15%
Spandex

- **New Concept**
Transparency | Eye-catching

We adopted many fabrics that are made entirely/partially see-through. In order to fulfill design versatility, there are not the only considerations to try, the weave of structure and type of yarn used can both come into play.

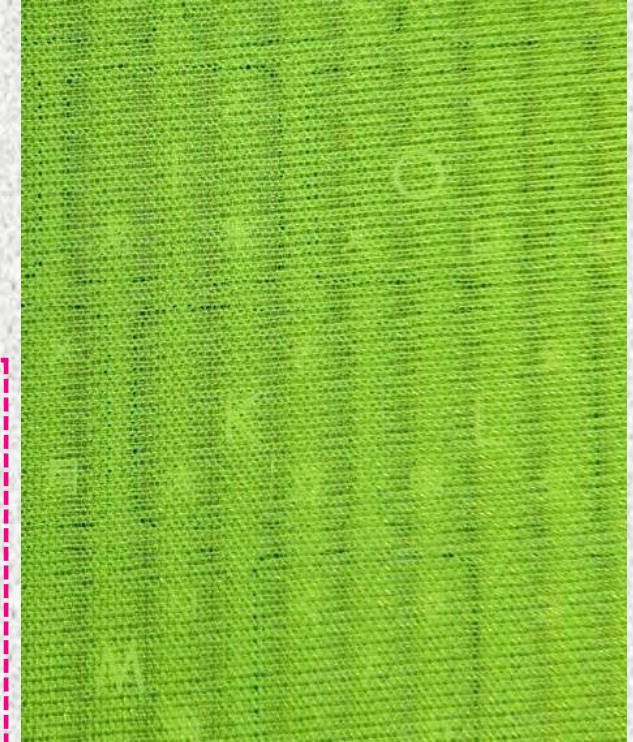


GS25-705T
44" 172G/YD

55% Polyester+30%
Cationic
Polyester+15% Dope
Dyed Polyester

GS25-691T
43" 1150G/YD

100% Polyester





GS25-708T
44" 360G/YD

100% Recycled Polyester

- **New Concept**
Ripstop | High strength

Ripstop fabrics are woven and usually made of nylon, using reinforcing technique that makes them more resistant to tearing force and extremely suitable for outdoor applications.

Besides typical ripstop materials, we also adopted knitted fabrics to fulfill performance and interesting texture.



GS25-713T
58" 340G/YD

100% Recycled
Polyester

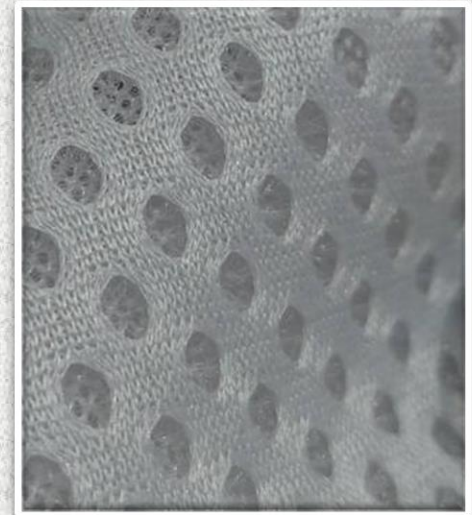
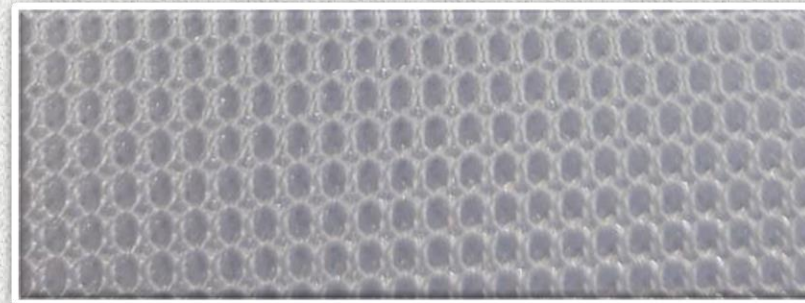
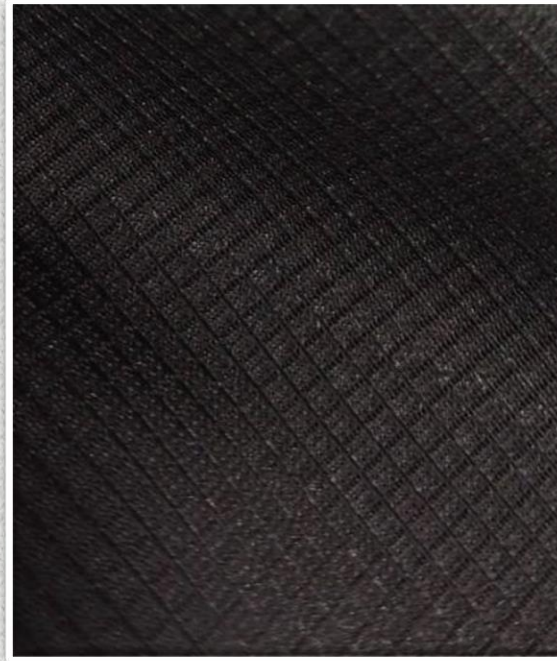
GS25-721T
56" 307G/YD

100% Recycled Nylon



– **New Concept**
Short Lead Time

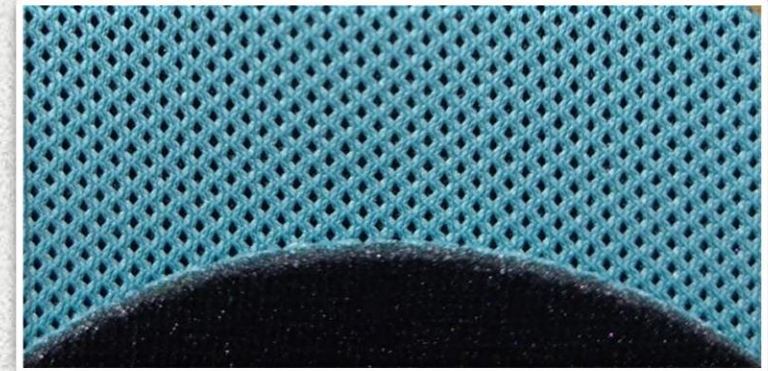
There are several items in this category, which are categorized into Godspeed's best proposal for most popular upper and lining applications.



– **New Concept
Laminate**

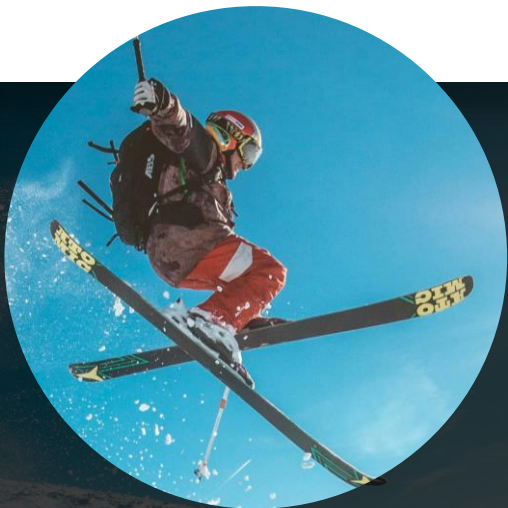
A composite product is always best solution designed to combine additional properties from different material.

According to your product category and using ideas, the fabric layer can be 2, 3, or more. We process lamination without any use of harmful substances.





– **Best Collection** –





SS

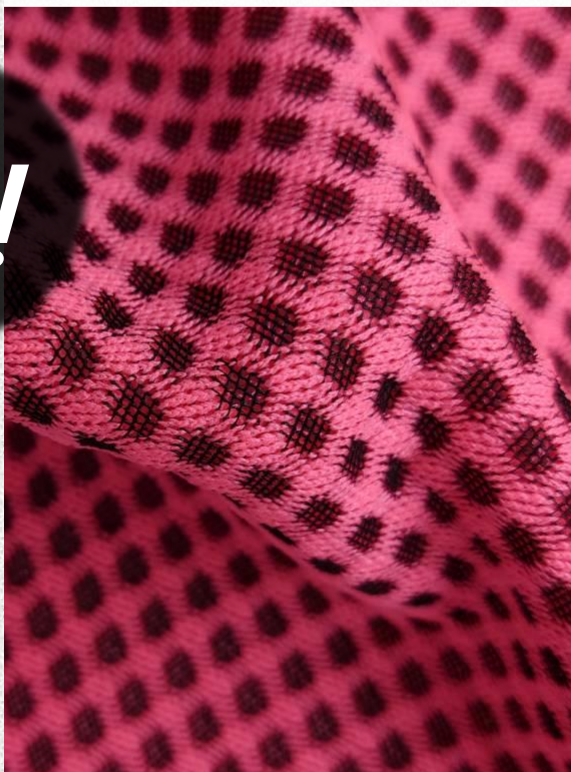
GS25-792T
52" 540G/YD
100% Polyester



FW

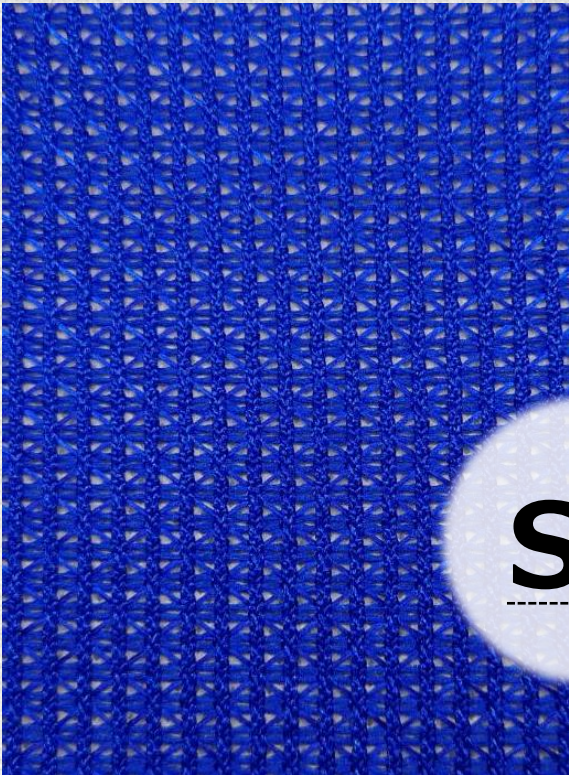
GS25-853T
54" 310G/YD
100% Polyester

GS25-853T
54" 310G/YD
100% Polyester



GS25-788T
54" 360G/YD
54% Recycled Polyester+36% Recycled CD Polyester+10% Polyester

3D Mesh



SS



FW



GS25-800T
44" 300G/YD
100% Recycled Polyester

GS25-821T
44" 300G/YD
100% Recycled Polyester

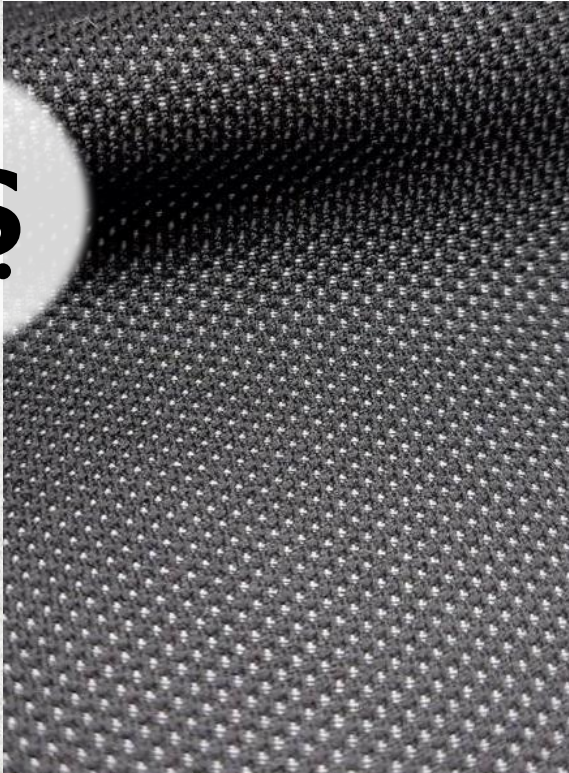
GS25-862T
58" 475G/YD
100% Recycled Polyester

GS25-875T
44" 405G/YD
74% Polyester+26%
Cationic Polyester

Upper Mesh



SS



GS25-827T
44" 220G/YD
76% Bamboo Charcoal
Polyester(Black)
+24% Tencel Yarn



FW

GS25-886T
56" 230G/YD
100% Recycled Polyester



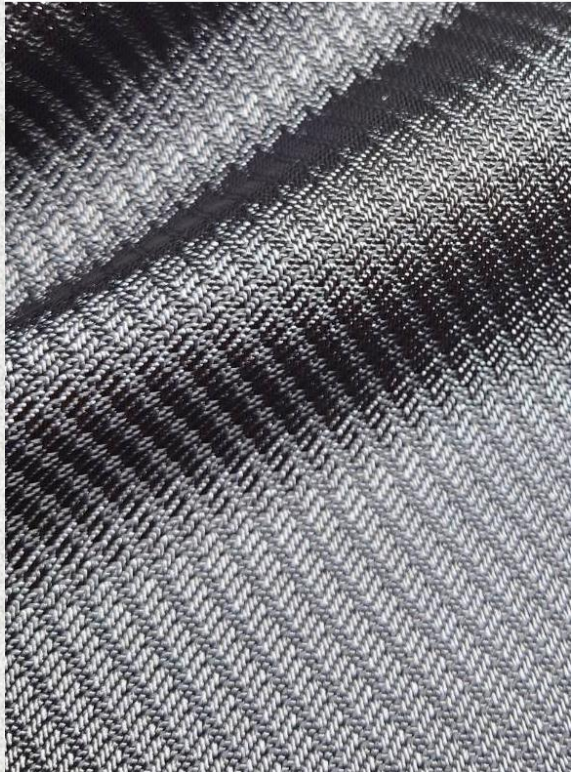
GS25-887T
56" 435G/YD
100% Recycled Polyester

GS25-826T
53" 245G/YD
100% Nylon
(Cooling Yarn)

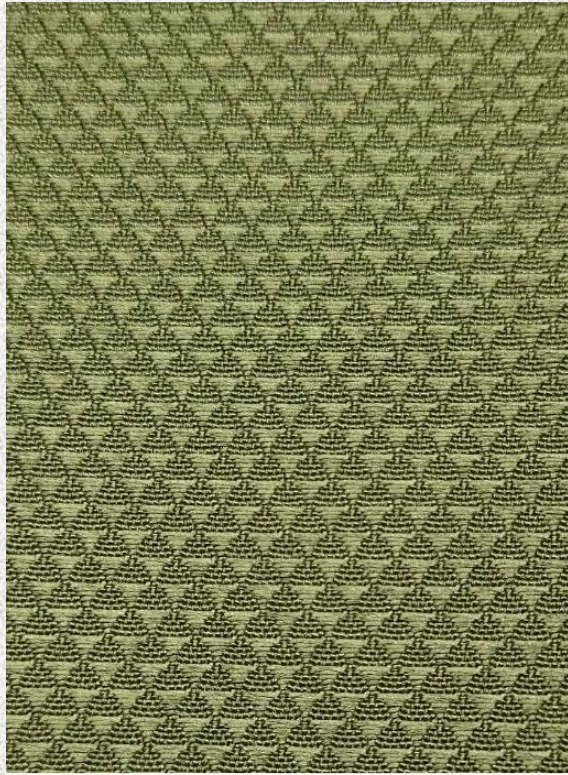
Lining



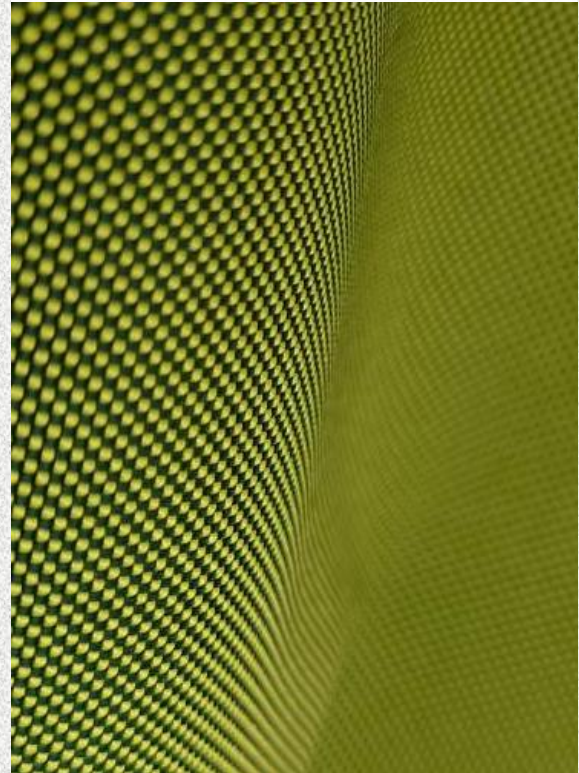
GS25-895T
52" 170G/YD
80% Nylon+20%
Spandex



GS25-908T
56" 448G/YD
60% Nylon+40% Dope
Dyed Polyester



GS25-910T
56" 410G/YD
100% Recycled Polyester



GS25-916T
56" 329G/YD
51% Recycled
Polyester+49% Nylon

Woven



MARKETING TEAM

Mike Tso | mike.tso@godspeed-tw.com

Vincent Hsieh | vincent.hsieh@godspeed-tw.com

**GODSPEED INDUSTRIAL GROUP
YU SHEN ENTERPRISE INC.**

No. 128, Taihe E. St., Beitun Dist., Taichung City 406, Taiwan

Tel : +886 4 2437 3123

Fax: +886 4 2437 3103

Contact US