



A X R E C Y C L E D T E C H P O R T F O L I O

VOL. 1

B U I L D A B E T T E R G L O V E .

BETTER MATERIALS FOR A BETTER PLANET

Sustainable Material Options

WATER-BASED MANUFACTURING

Water-based manufacturing allows AX® Materials to create a range of synthetic leather materials with reduced or zero Dimethylformamide (DMFa). Using water-based resins eliminates the need for traditional solvents in the manufacturing process, while still giving the material an authentic look and feel.

PFC-FREE WATER REPELLENCY

AX® Materials offer water-repellent treatments that eliminate the use of perfluorocarbons (PFCs), “forever chemicals” that linger in the environment and contribute to greenhouse gasses.

SOLUTION DYED YARN

Solution dyed and pigment yarn dyed are more colorfast, use less water, and produce less CO2 than traditionally dyed fabrics. This enables direct savings on production costs, and ensures substantial reduction of the environmental footprint of the final products.

BLUESIGN® MATERIALS

Bluesign® certified products follow strict guidelines for sustainable textiles, including dramatic reductions of water, energy and chemical use during production. AX® Materials feature a selection of Bluesign® materials to help glove and gear manufacturers meet their sustainability metrics.

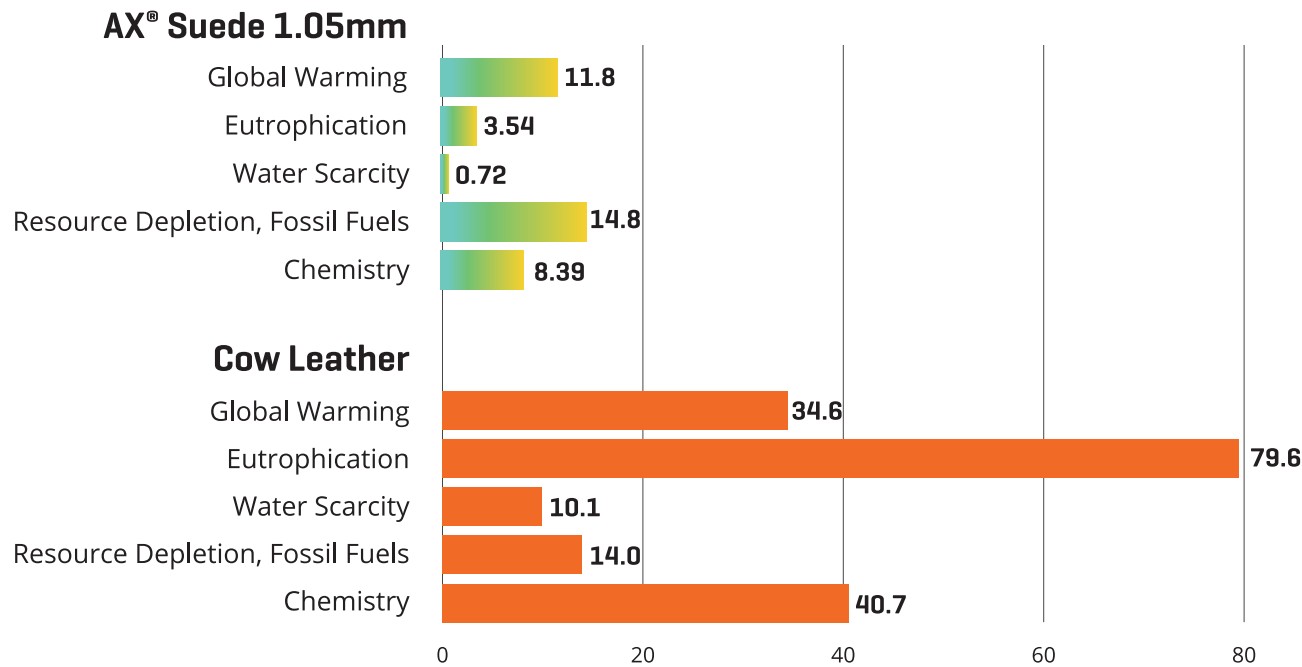
- ✓ LOWER CARBON EMISSIONS
- ✓ LOWER WATER USAGE
- ✓ REDUCED EUTROPHICATION
- ✓ LESS CHEMICALS USED IN MANUFACTURING
- ✓ INCREASED DURABILITY FOR LONGER TERM USE

AX[®] MATERIALS vs COW LEATHER

With information gathered through the HIGG Materials Sustainability Index.

The HIGG Index is a set of tools that assess the social and environmental performance of the value chain and the environmental impacts of products. Below is a comparison of our synthetic suede with traditional cow leather.

AX[®] Materials are made with a vastly reduced environmental impact compared to natural leather.



*Note: Values are observational figures only. AX[®] Suede NovoSplit 1.05mm values are shown.

3X
LOWER GLOBAL
WARMING POTENTIAL

22X
LOWER NUTRIENT
POLLUTION IN WATER

14X
LESS WATER USED IN
MANUFACTURING

4X
LESS CHEMISTRY IN
MANUFACTURING

PROVEN LEATHER ALTERNATIVES

Ultra durable & breathable



ReNovoBuck

1.05mm



60% Recycled Nylon
3000+ Abrasion Cycles
Nubuck finish, high abrasion
Available in 0.6mm, 0.8mm & 1.05mm

ReNovoSplit

1.05mm



60% Recycled Nylon
3000+ Abrasion Cycles
Water-based PU, low DMFa, split suede
option, high abrasion
Available in 0.6mm, 0.8mm & 1.05mm

Laredo RPET

0.55mm | 0.75mm



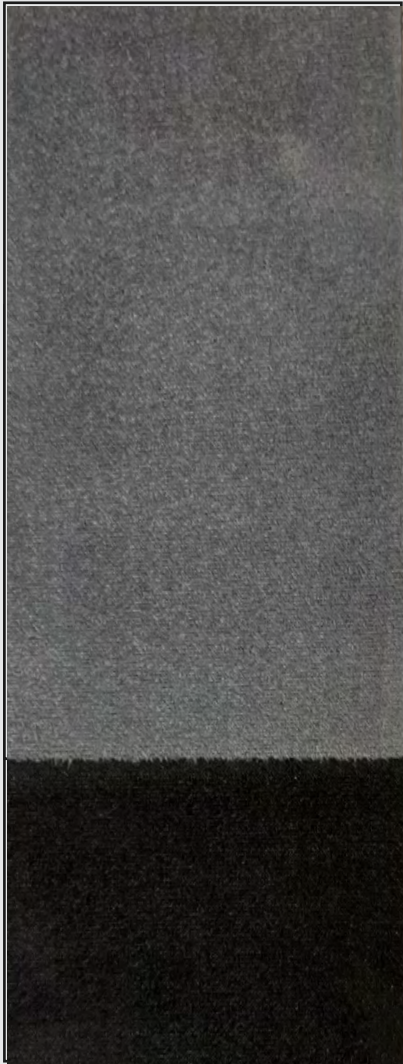
0.75mm 54% Recycled Polyester
1200+ Abrasion Cycles
0.55mm 57% Recycled Polyester
250+ Abrasion Cycles
Superior softness, dexterity, grain

CORE PERFORMANCE

Durable & breathable

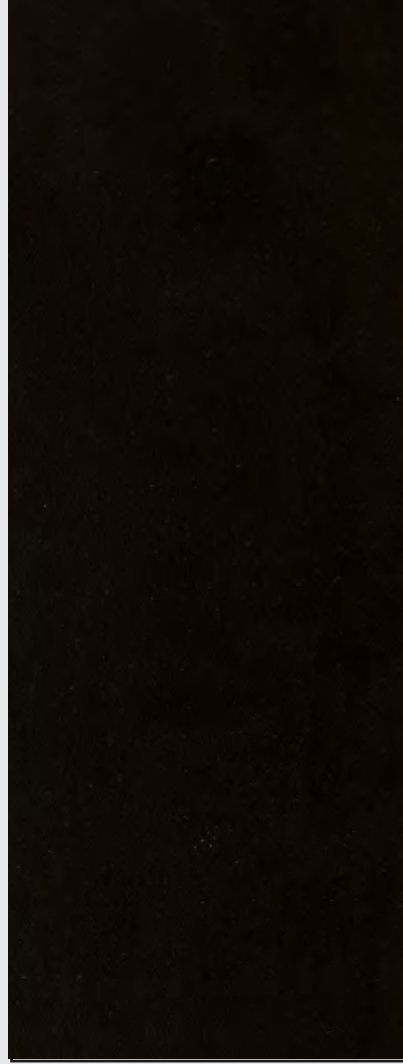


Bravo RPET 0.80mm



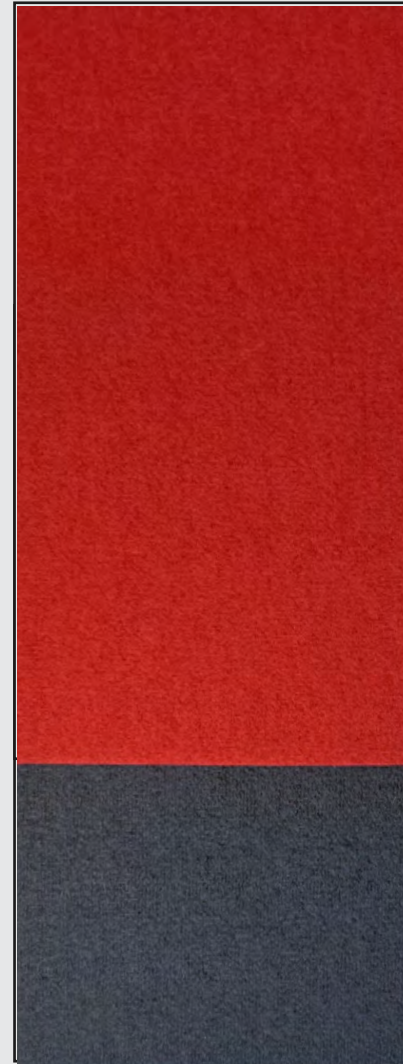
45% Recycled Polyester
600+ Abrasion Cycles
Stretch, softness, quick-dry

Diez RPET 0.80mm



54% Recycled Polyester
1000+ Abrasion Cycles
Soft, strong tear properties

Eco-Tuff RPET CDP 0.85mm



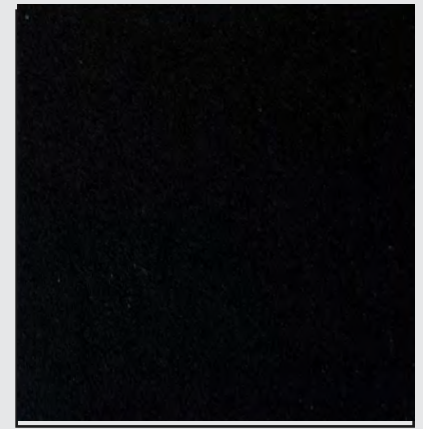
24% Recycled Polyester
1000+ Abrasion Cycles
Best option for color/water-based

Quattro 8 RPET 0.80mm



38% Recycled Polyester
1200+ Abrasion Cycles
Stretch, high abrasion

Rivolta-S Buck RPET 0.75mm



61% Recycled Polyester
600+ Abrasion Cycles
Nubuck, grip

CONNECT

Touch screen conductive



SPORTS



OUTDOOR



HANDLE BAR

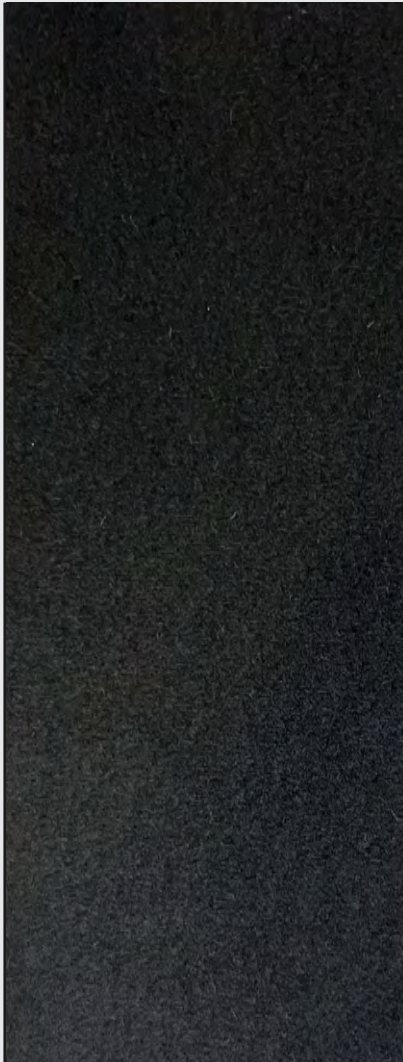


WORK



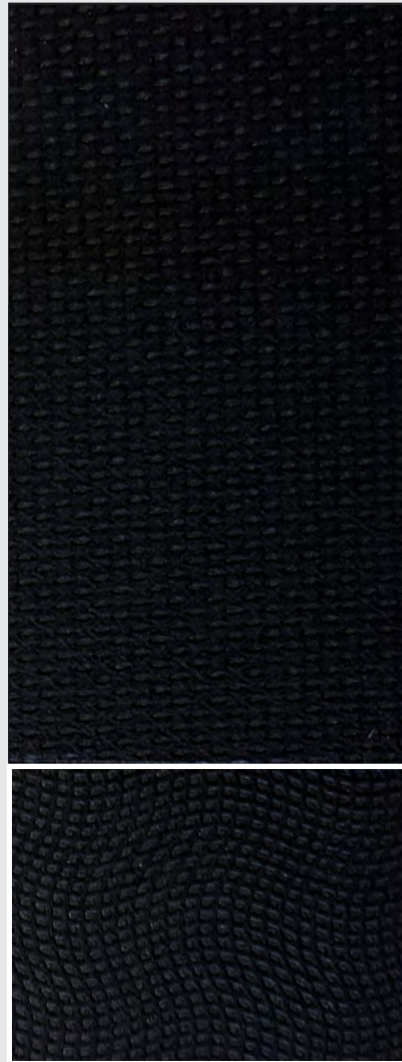
TACTICAL

Fit Connect RPET 0.55mm



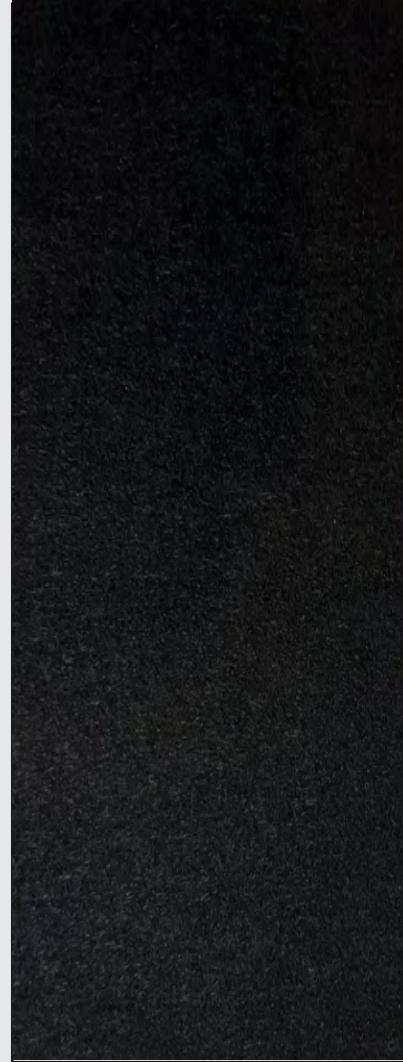
53% Recycled Polyester
300+ Abrasion Cycles
Dexterity

**Eco-Tuff RPET
Connect + Emboss 0.75mm**



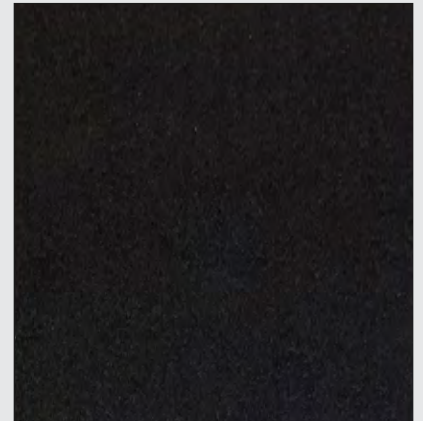
60% Recycled Polyester
300+ Abrasion Cycles
Emboss, grip

RE-CPM8 Connect 0.80mm



60% Recycled Nylon
900+ Abrasion Cycles
Connect core palm

Dyno RPET Connect 0.80mm



53% Recycled Content
1000+ Abrasion Cycles
Durable, grip

Rev PU RPET Connect 0.80mm



40% Recycled Polyester
450+ Abrasion Cycles
Available in various textures

HIGH DEXTERITY

Thin (0.65mm and below), lightweight & breathable



OUTDOOR



HANDLE BAR



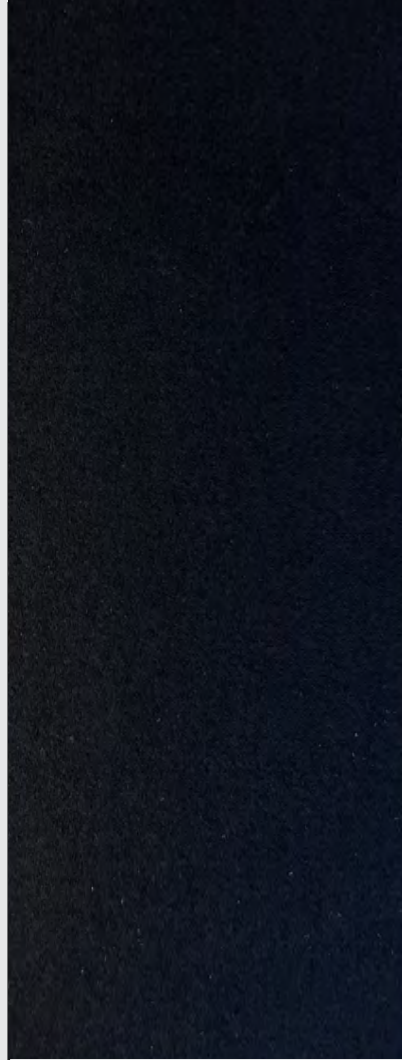
TACTICAL

Cinco RPET 0.60mm



60% Recycled Polyester
400+ Abrasion Cycles
Stretch, quick dry

Quattro RPET 0.50mm



52% Recycled Polyester
150-200 Abrasion Cycles
High dexterity, PU grip

Vida RPET 0.60mm



36% Recycled Polyester
400+ Abrasion Cycles
Bluesign certified, quick dry

Cinco-VN RPET 0.65mm



68% Recycled Polyester
400-600 Abrasion Cycles
Extra stretch, quick dry

Slim RPET 0.50mm



68% Recycled Polyester
120+ Abrasion Cycles
Dexterity, quick dry

COATED PERFORMANCE

Grip & water repellancy

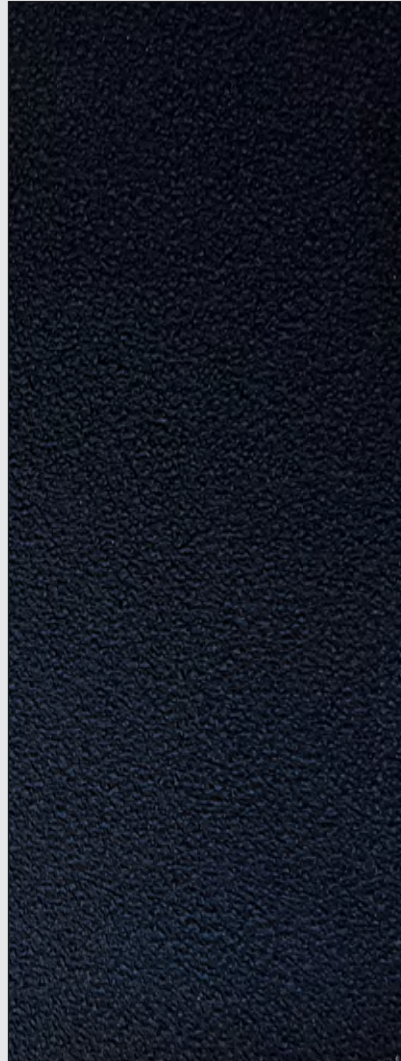


Re-Ritter 0.50mm



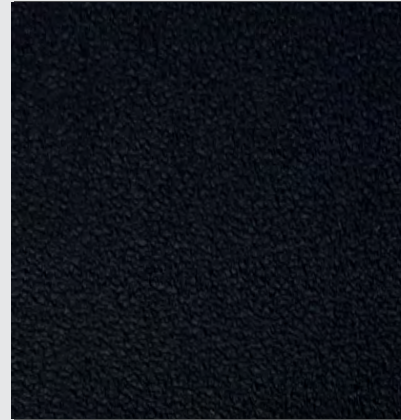
40% Recycled Nylon
250+ Abrasion Cycles
3D emboss, grip, high dexterity

GripPlus RPET 0.85mm



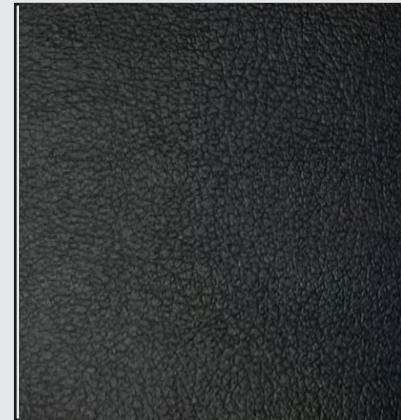
55% Recycled Polyester
800+ Abrasion Cycles
Engineered dry/wet grip,
high tear performance

SuperTuff RPET 0.85mm



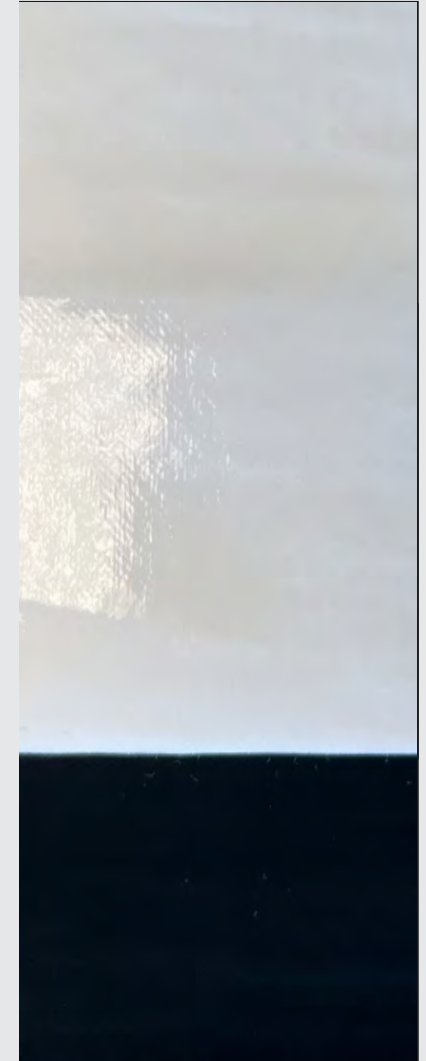
55% Recycled Content
4000+ Abrasion Cycles
High abrasion & tear performance

Rev PU RPET Grip 0.8mm



40% Recycled Polyester
450+ Abrasion Cycles
Soft, available in various textures

COF-RPET 0.85mm



56% Recycled Polyester
10,000+ Abrasion Cycles
High grip, strong durability,
receiver's gloves

PACKAGE SOLUTIONS

Breatheable & water repellent



Slim RPET-Fleece WP Pack

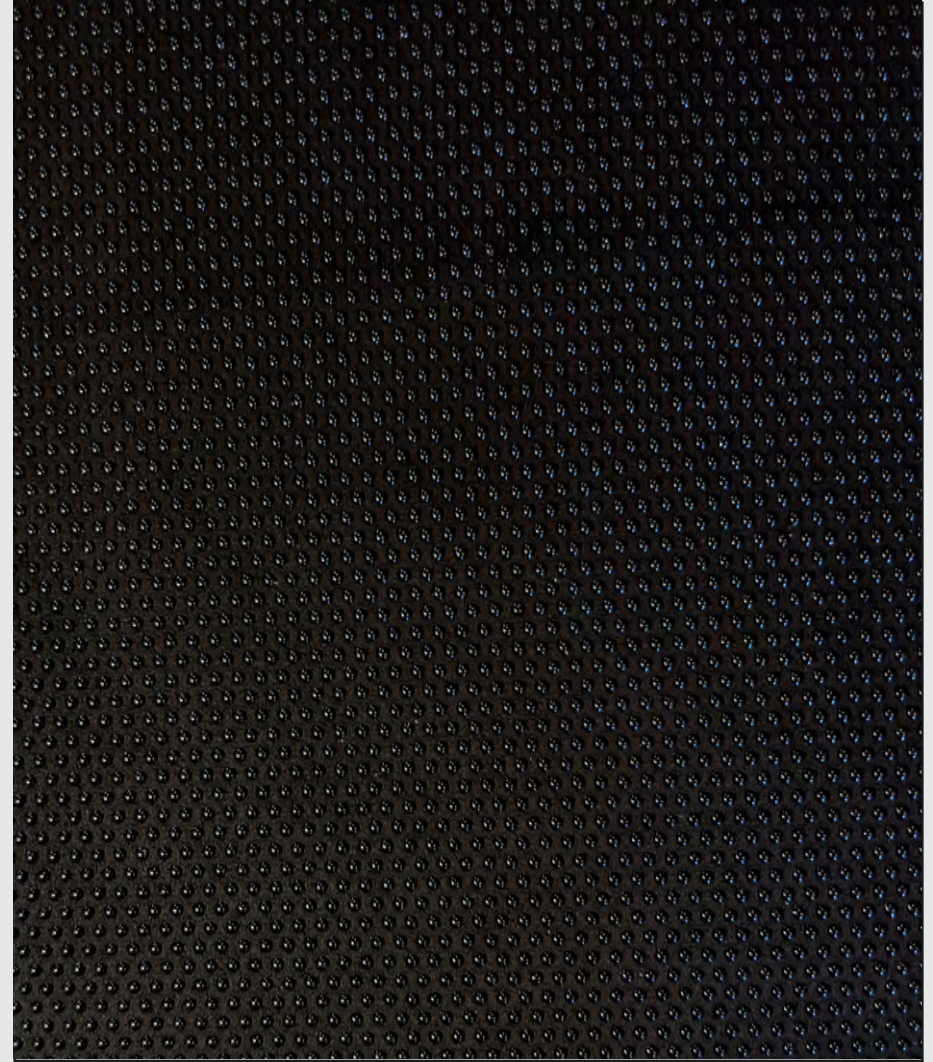
1.25mm



40% Recycled Polyester
600+ Abrasion Cycles
3-in-1 waterproof + insulation

Cinco RPET + Dot Silicon

1.0mm



36% Recycled Polyester Base
2000+ Abrasion Cycles
Silicon grip, high abrasion



SUMMARY MATRIX

| MATERIAL | RECYCLED CONTENT | ABRASION | PRODUCTION LOCATION | CO WR | DMFa BELOW 50ppm | SOLUTION OR YARN DYED BLK | SPECIAL FEATURES |
|--|------------------------|----------|---------------------|-------|------------------|---------------------------|--|
| PROVEN LEATHER ALTERNATIVES | | | | | | | |
| ReNovoBuck 1.05mm | 60% Recycled Nylon | 3000+ | China | X | | X | Nubuck finish |
| ReNovoSplit 1.05mm | 60% Recycled Nylon | 3000+ | China | X | X | X | Water-based PU split suede option |
| Laredo RPET 0.75mm | 54% Recycled Polyester | 1200+ | Korea | X | | X | Grain leather replacement |
| Laredo RPET 0.55mm | 57% Recycled Polyester | 250+ | Korea | X | | X | Grain leather replacement |
| CORE PERFORMANCE | | | | | | | |
| Bravo RPET 0.80mm | 45% Recycled Polyester | 600+ | Vietnam | X | X | X | Quick dry, stretch |
| Diez RPET 0.80mm | 54% Recycled Polyester | 1000+ | Korea | X | | X | Strong tear properties |
| Quattro 8 RPET 0.80mm | 38% Recycled Polyester | 1200+ | Korea | X | X | X | Stretch, high abrasion |
| Eco-Tuff RPET CDP 0.85mm | 24% Recycled Polyester | 1000+ | Korea | X | X | X | Vibrant colors, water-based |
| Rivolta-S Buck RPET 0.75mm | 61% Recycled Polyester | 600+ | Vietnam | | | X | Nubuck with grip |
| PACKAGE SOLUTIONS | | | | | | | |
| Slim RPET-Fleece WP Pack 1.25mm | 40% Recycled Polyester | 600+ | Korea | X | X | X | 3 Layer with waterproof membrane |
| Cinco RPET + Dot Silicon 1.0mm | 36% Recycled Poly Base | 2000+ | Korea | X | X | X | Stretch + silicon grip |
| HIGH DEXTERITY (0.65mm and below) | | | | | | | |
| Cinco RPET 0.60mm | 60% Recycled Polyester | 400+ | Korea | X | X | X | Stretch |
| Quattro RPET 0.50mm | 52% Recycled Polyester | 150-200 | Korea | X | X | X | High dexterity, 'PU' grip |
| Vida RPET 0.60mm | 36% Recycled Polyester | 400+ | Korea | X | X | X | Bluesign certified |
| Cinco-VN RPET 0.65mm | 68% Recycled Polyester | 400-600 | Vietnam | X | X | X | Extra-stretch |
| Slim RPET 0.50mm | 68% Recycled Polyester | 120+ | Korea | X | X | X | Dexterity, quick dry |
| COATED PERFORMANCE | | | | | | | |
| Re-Ritter PORE 0.50mm | 40% Recycled Nylon | 250+ | Korea | | | | 3D emboss, grip, high dexterity |
| GripPlus RPET 0.85mm | 55% Recycled Polyester | 800+ | Korea | | | | Dry/wet grip with high tear properties |
| Rev PU RPET Grip DE-73 0.80mm | 40% Recycled Polyester | 450+ | Vietnam | | | | Various textures available |
| SuperTuff RPET 0.85mm | 55% Recycled Polyester | 4000+ | Korea | | | | High abrasion & tear performance |
| COF-RPET 0.85mm | 56% Recycled Polyester | 10,000+ | Korea | | | | High grip, ultra high abrasion |
| TOUCHSCREEN CONDUCTIVE | | | | | | | |
| Fit Connect RPET 0.55mm | 53% Recycled Polyester | 300+ | Taiwan | | | X | Dexterity |
| Eco-Tuff RPET Connect + Emboss 0.75mm | 60% Recycled Polyester | 300+ | Korea | X | X | X | Emboss and grip |
| RE-CPM8 Connect 0.80mm | 60% Recycled Nylon | 900+ | China | X | | X | Core palm |
| Rev PU RPET Connect R-8 0.80mm | 40% Recycled Polyester | 450+ | Vietnam | | | | Available in various textures |
| Dyno RPET Connect 0.80mm | 53% Recycled Polyester | 1000+ | Taiwan | | | X | Durable, grip |
| <i>Note: suede and embossed materials may experience reasonable color and surface variances.</i> | | | | | | | |

FEATURING GRS CERTIFIED YARN

GRS stands for Global Recycle Standard. If a product carries a GRS certificate, it is manufactured using recycled materials. The Textile Exchange administers the GRS certificate. It is a non-profit that attempts to reduce the impact of the textile industry on the environment. **All AX Materials recycled yarns are GRS Certified.**

With their new Climate+ strategy, Textile Exchange is the driving force for urgent climate action on textile fiber and materials with a goal of 45% reduced CO2 emissions from textile fiber and material production by 2030.

Our business is based on principles that prioritize efficiency and the reuse of resources at every level, from fibers to water to chemicals.





0.55mm

AX Bolt K290 RPET + InstaChill

100% Recycled Polyester

62" width, FOB Korea

Sample MOQ: 30 yards/color

Production MOQ: 300 yards

Production Lead Time: 21-28 days

Martindale Abrasion: 10,000 dry / 5,000 wet